

PROGRESS ON SANITATION AND DRINKING-WATER | 2013 UPDATE



WHO Library Cataloguing-in-Publication Data

Progress on sanitation and drinking-water - 2013 update.

1. Water supply - standards. 2. Sanitation - trends. 3. Drinking-water - supply and distribution. 4. Program evaluation.
I. World Health Organization. 2. UNICEF.

ISBN 978 92 4 150539 0

[NLM classification: WA 670]

© World Health Organization and UNICEF 2013

All rights reserved. Publications of the World Health Organization can be obtained from WHO Press, World Health Organization, 20 Avenue Appia, 1211 Geneva 27, Switzerland [tel: +41 22 791 3264; fax: +41 22 791 4857; email: bookorders@who.int].

The World Health Organization and UNICEF welcome requests for permission to reproduce or translate their publications — whether for sale or for noncommercial distribution. Applications and enquiries should be addressed to WHO, Office of Publications, through the WHO web site [http://www.who.int/about/licensing/copyright_form/en/index.html] or to UNICEF, Division of Communication, 3 United Nations Plaza, New York 10017, USA [fax: +1 212 303 7985; e-mail: nyhqdoc.permit@unicef.org].

The designations employed and the presentation of the material in this publication do not imply the expression of any opinion whatsoever on the part of the World Health Organization or UNICEF concerning the legal status of any country, territory, city or area or of its authorities, or concerning the delimitation of its frontiers or boundaries. Dotted and dashed lines on maps represent approximate border lines for which there may not yet be full agreement.

The mention of specific companies or of certain manufacturers' products does not imply that they are endorsed or recommended by the World Health Organization or UNICEF in preference to others of a similar nature that are not mentioned. Errors and omissions excepted, the names of proprietary products are distinguished by initial capital letters.

The figures included in this report have been estimated by the WHO/UNICEF Joint Monitoring Programme for Water Supply and Sanitation [www.wssinfo.org] to ensure compatibility, thus they are not necessarily the official statistics of the concerned country, area or territory, which may use alternative rigorous methods.

The World Health Organization and UNICEF do not warrant that the information contained in this publication is complete and correct and shall not be liable for any damages incurred as a result of its use.

Photo credits: WaterAid/Jon Spaul [front cover]; UNICEF/INDA2012-00406/SANDEEP BISWAS [p7]; UNICEF/INDA2012-00295/Singh [p9]; iStockphoto/com africa924 [p11]; UNICEF/MLWB2012-01630/CHRISTINE NESBITT [p13]; WaterAid/Zute Lightfoot [back cover]

Design and Layout: www.paprika-annecy.com
Printed in France

CONTENTS

GLOBAL SANITATION TRENDS 1990–2011.....	4
TRENDS IN OPEN DEFECACTION 1990–2011.....	6
GLOBAL DRINKING-WATER TRENDS 1990–2011.....	8
TOWARDS A POST-2015 DEVELOPMENT AGENDA.....	10
THE JMP METHOD.....	12
COUNTRY, REGIONAL AND GLOBAL ESTIMATES ON SANITATION AND DRINKING-WATER.....	14
TRENDS IN URBAN AND RURAL SANITATION COVERAGE, 1990–2011.....	36
TRENDS IN URBAN AND RURAL DRINKING-WATER COVERAGE, 1990–2011.....	37
MILLENNIUM DEVELOPMENT GOALS: REGIONAL GROUPINGS.....	38

JMP 2013 UPDATE: HIGHLIGHTS

This JMP 2013 update presents country, regional and global estimates for the year 2011. Since the JMP 2012 update, which presented 2010 estimates, results of 230 surveys have been added to the JMP database, bringing the total number of surveys in the JMP database close to 1700. As is to be expected from an annual update, the global estimates have hardly changed. Drinking-water coverage in 2011 remains at 89% – which is 1% above the MDG drinking-water target. In 2011, 768 million people relied on unimproved drinking-water sources.

Sanitation coverage in 2011 was 64%. The world remains off track to meet the MDG sanitation target of 75% and if current trends continue, it is set to miss the target by more than half a billion people. By the end of 2011, there were 2.5 billion people who still did not use an improved sanitation facility. The number of people practising open defecation decreased to a little over 1 billion, but this still represents 15% of the global population.

Since 2011, the JMP has facilitated broad discussions among more than 200 representatives from the water, sanitation and hygiene (WASH) sector, academia and the human rights and global monitoring communities to formulate new global WASH targets and indicators for consideration under

the post-2015 development agenda. On page 10 of this report, this process is further explained, and the preliminary outcomes of these discussions are presented for further consideration.

With less than three years to go, a final push is needed to meet the MDG sanitation target. This requires providing around 1 billion people with access to sanitation – a daunting task that can only be accomplished through the concerted efforts of many partners.

In March 2013, the Deputy Secretary-General of the United Nations called upon the world to increase global efforts to accelerate progress towards the MDG sanitation target, which is among the targets for which progress has fallen furthest behind. In particular, he called upon governments, civil society, the private sector and UN agencies to pull together and help end the practice of open defecation by the year 2025. Page 6 of this report shows which countries have decreased open defecation rates the most since 1990. Some of these countries still have a rather large proportion of the population practising open defecation, while others have reduced the practice to only a few per cent of the population.

1.

GLOBAL SANITATION TRENDS

1990–2011

In 2011, almost two thirds [64%] of the world population relied on improved sanitation facilities, while 15% continued to defecate in the open. Since 1990, almost 1.9 billion people have gained access to an improved sanitation facility. The world, however, remains off track to meet the Millennium Development Goal [MDG] sanitation target, which requires reducing

the proportion of people without access from 51% in 1990, to 25% by 2015. The greatest progress has been made in Eastern Asia, where sanitation coverage has increased from 27% in 1990 to 67% in 2011. This amounts to more than 626 million people gaining access to improved sanitation facilities over a 21-year period.

There are 45 countries where sanitation coverage is less than 50 percent

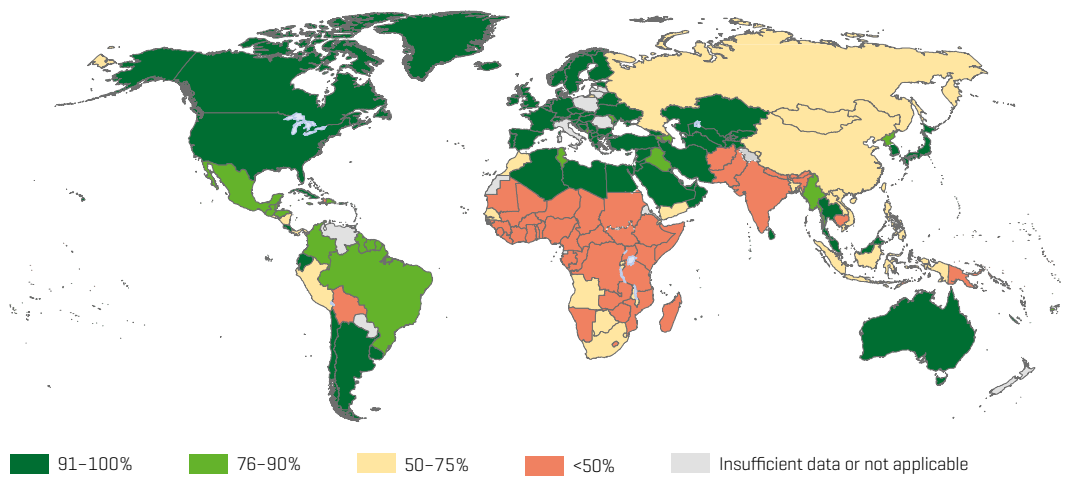


Figure 1. Proportion of the population using improved sanitation in 2011.

Open defecation rates have sharply declined in almost all developing regions

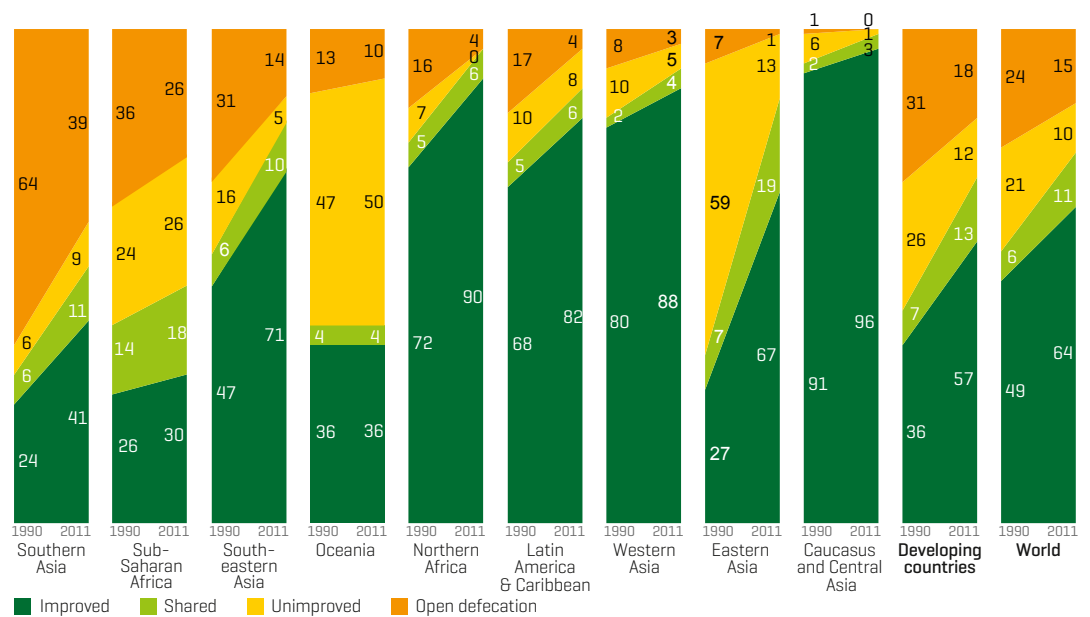


Figure 2. Sanitation coverage trends by developing regions and the world, 1990–2011.

By the end of 2011, there were 2.5 billion people who lacked access to an improved sanitation facility. Of these, 761 million use public or shared sanitation facilities and another 693 million use facilities that do not meet minimum standards of hygiene (unimproved

sanitation facilities). The remaining 1 billion (15% of the world population) still practise open defecation. The majority (71%) of those without sanitation live in rural areas, where 90% of all open defecation takes place.

Since 1990, 1.1 billion people in urban areas gained access to improved sanitation whereas the urban population grew by 1.3 billion people

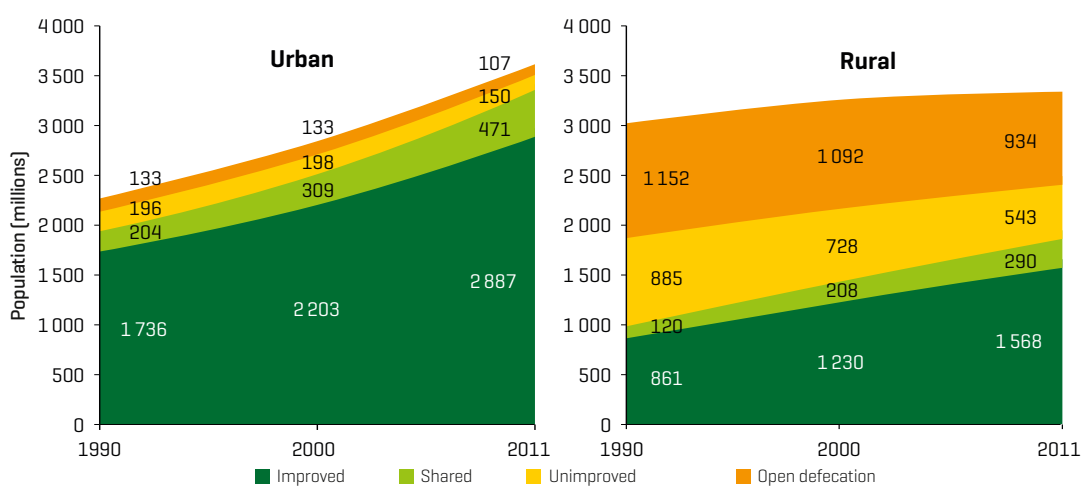


Figure 3. Global sanitation coverage and open defecation trends in urban and rural areas by population, 1990–2011.

27 Countries have more than a quarter of the population still practising open defecation

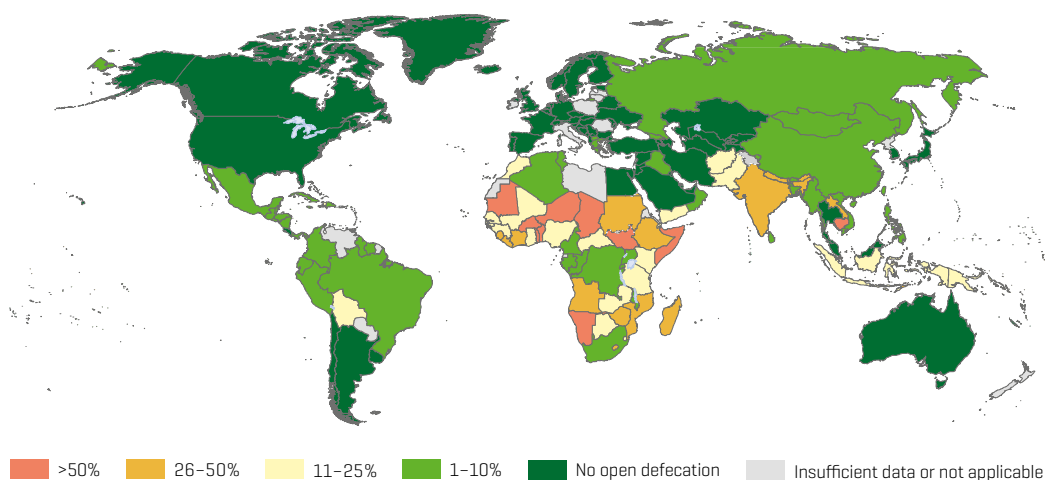


Figure 4. Proportion of the population practising open defecation in 2011.

2.

TRENDS IN OPEN DEFECCATION

1990–2011

Open defecation rates declined globally from 24% in 1990 to 15% in 2011. In absolute numbers, this signifies a drop of 244 million people to 1.04 billion in 2011. The decline in the population practising open defecation has differed from region to region. Eastern Asia, South-eastern Asia and the Latin America and

Caribbean regions have seen a steady decline since the JMP's earliest measurements describing conditions in 1990. In Southern Asia, the population practising open defecation peaked around 1995, after which it declined. Only in sub-Saharan Africa is the number of people defecating in the open still increasing.

The global population practising open defecation is slowly declining

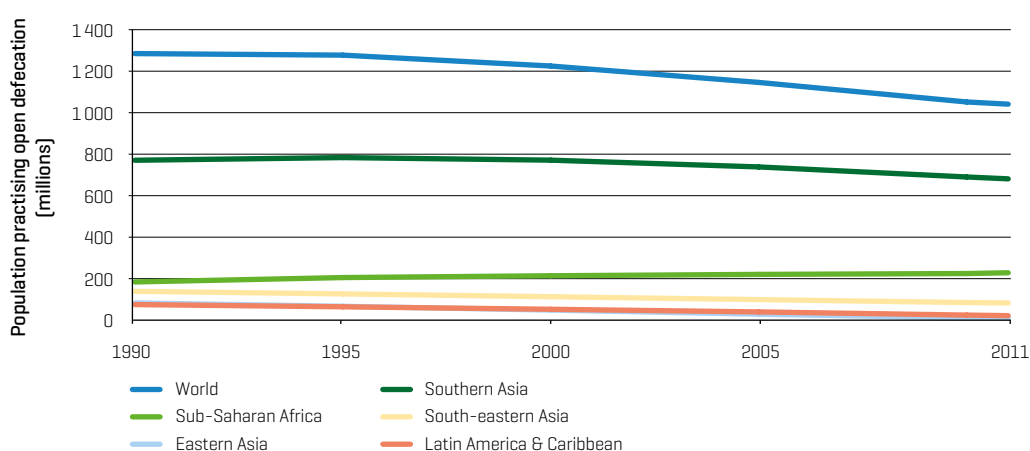


Figure 5. Open defecation trends in developing regions and the world, 1990–2011.

Many countries have made remarkable progress in reducing open defecation rates

Country	Open defecation rate [%]		Percentage point decline	Annual rate of decline [%]
	1990	2011	1990–2011	1990–2011
Viet Nam	40	3	37	12.3
Bangladesh	32	4	28	9.9
Peru	34	6	28	8.3
Malawi	31	6	25	7.8
Honduras	33	7	26	7.4
Lao People's Democratic Republic*	69	32	37	4.8
Plurinational State of Bolivia	46	19	27	4.2
Pakistan	52	23	29	3.9
Angola	57	26	31	3.7
Haiti	50	23	27	3.7
Ethiopia	93	45	48	3.5
Nepal	84	43	41	3.2
Benin	80	54	26	1.9
Cambodia	84	58	26	1.8

* There are no 1990 open defecation estimates for Lao People's Democratic Republic, so the range given here is for 1995–2011.

Table 1. Countries where open defecation rates declined 25 percentage points or more since 1990



3.

GLOBAL DRINKING-WATER TRENDS

1990–2011

By the end of 2011, 89% of the world population used an improved drinking-water source, and 55% enjoyed the convenience and associated health benefits of a piped supply on premises. An estimated 768 million people did not use an improved source for drinking-water in 2011, including 185 million who relied on surface water to meet their daily drinking-water needs. Urban drinking-water coverage has remained high over the past two decades, and currently only 4% of the urban population relies

on unimproved sources. However, in spite of the high urban drinking-water coverage rates, issues of service quality remain. Supplies are often intermittent and this increases contamination risks. Of the 2.1 billion people who gained access since 1990, almost two thirds, 1.3 billion, lived in urban areas. By the end of 2011, 83% of the population without access to an improved drinking-water source lived in rural areas.

Sub-Saharan Africa and Oceania have the lowest drinking-water coverage

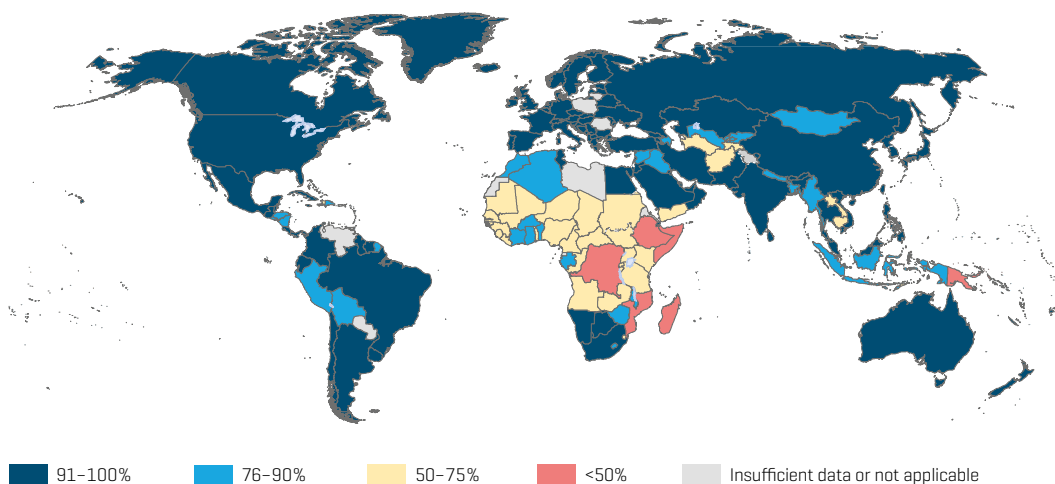


Figure 6. Proportion of the population using improved sources of drinking-water in 2011.

Less than a third of the population in four regions enjoy piped water on premises

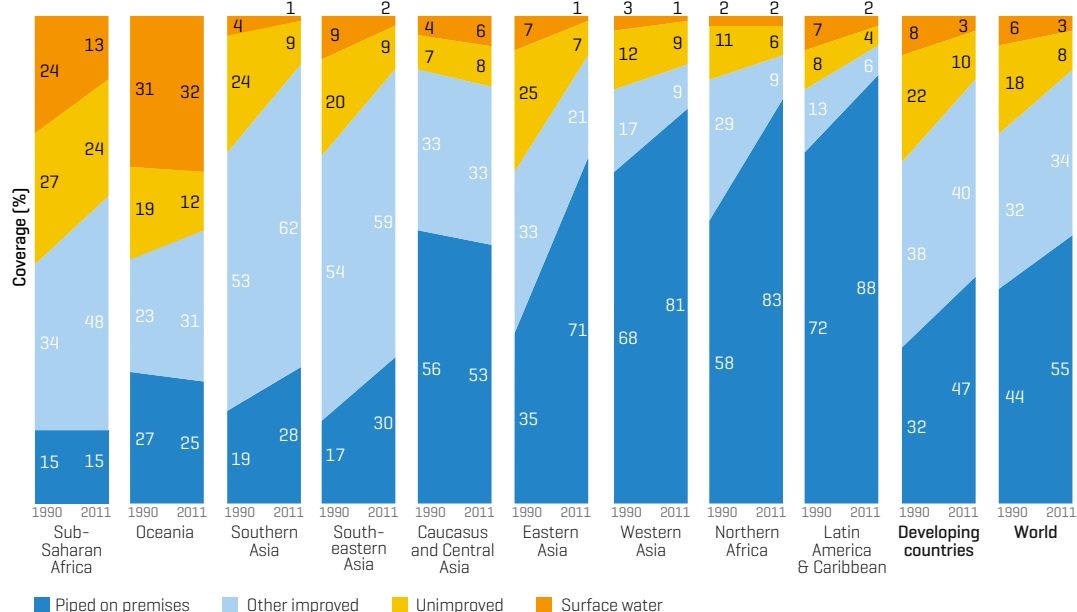
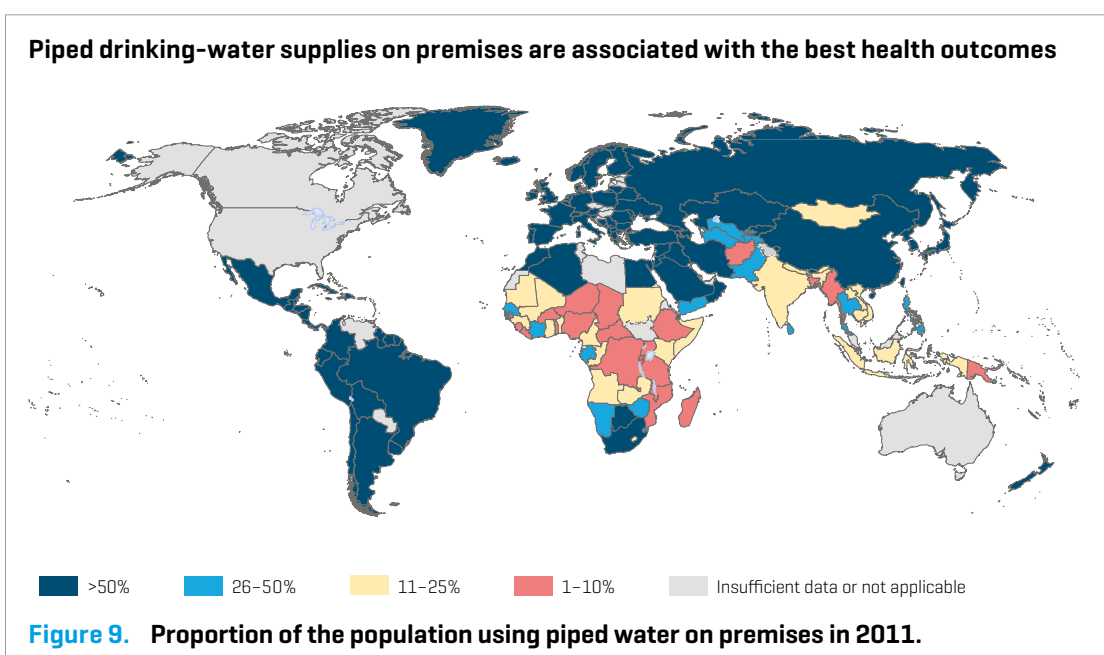
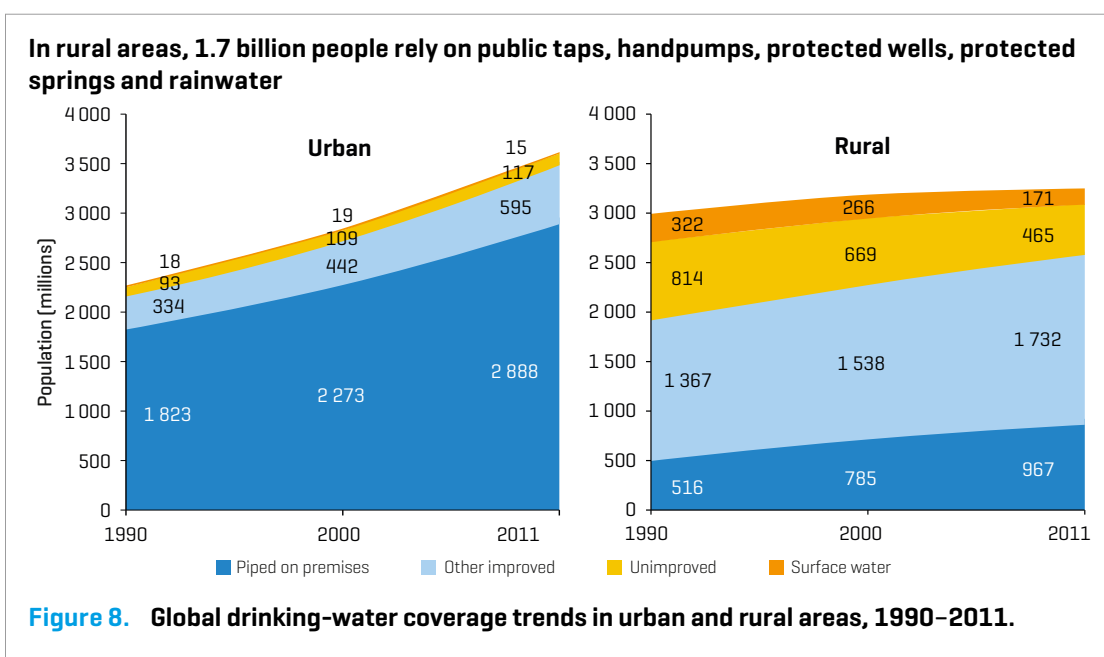


Figure 7. Drinking-water coverage trends by developing regions and the world, 1990–2011.



Over 70% of the global progress made in access to improved sources of drinking-water has been achieved through gaining access to piped drinking-water on

premises. More than two thirds of the 1.5 billion people who gained access to piped supplies at home live in urban areas.



4.

TOWARDS A POST-2015 DEVELOPMENT AGENDA

The WHO/UNICEF JMP-led technical process on the formulation of post-2015 WASH targets and indicators

A new era: the post-2015 consultations

Anticipating the discussion on post-2015 development goals, the World Health Organization (WHO) and the United Nations Children's Fund (UNICEF) convened a first consultation with broad stakeholder representation in Berlin in May 2011, to start a process of formulating proposals for post-2015 targets and corresponding indicators for water, sanitation and hygiene (WASH), in the context of possible goals.

The first consultation reviewed the current global drinking-water and sanitation monitoring landscape, identified the strengths and weaknesses of the current MDG targets and indicators, discussed the relevance of the principles underlying the human rights to water and sanitation for consideration in future goals and targets and reached agreement on a roadmap towards the formulation of a menu of options with a limited number of viable global targets and indicators corresponding to a possible global WASH goal.

As an outcome of the Berlin consultation, four working groups¹ were established: Water Supply, Sanitation, Hygiene and Equity and Non-Discrimination (END), consisting of WASH sector and human rights experts and representatives from academia and the global monitoring community tasked with the development of targets and indicators for the specific subsector (except for END, which was cross-sectoral). Participants agreed to reconvene for a second consultation in The Hague, the Netherlands, in December 2012 to review the work of the respective groups.

In the development of targets and indicators, all working groups were asked to consider the following principles:

- They should be formulated in the context of a simple, inspirational vision, articulated around universal access and use of safe drinking-water and sanitation, with hygiene being added to the scope of the new targets.
- They should reflect progressive realization of the human rights to safe drinking-water and sanitation.
- They should build on existing indicators and monitoring mechanisms to ensure continuity in global monitoring.

¹ Working group leads: Water Supply: WaterAid and International Water and Sanitation Centre; Sanitation: World Bank Water and Sanitation Program; Hygiene: United States Agency for International Development; Equity and Non-Discrimination: United Nations (UN) Secretary-General Special Rapporteur on the Human Right to Water and Sanitation/Office of the High Commissioner on Human Rights.

Process

Over the ensuing 18 months, the working groups developed proposals for targets and indicators. These were based on the above-mentioned principles and a shared vision that:

- **No one** should practise open defecation.
- **Everyone** should have safe water, sanitation and hygiene at home.
- **All schools and health centres** should have water, sanitation and hygiene.
- Water, sanitation and hygiene should be **sustainable**.
- **Inequalities** in access should be **eliminated**.

The targets and indicators were presented in a consolidated document to the wider development community during the second consultation, held in The Hague in early December 2012.

The proposed targets address the objectives of progressive realization through increasing the numbers of people using services, reducing inequalities, increasing service levels, driving progress in schools and health centres as well as households and achieving sustainable, universal coverage. At their core, the targets are aspirational and visionary. They do not merely formulate what is practical to achieve, but instead strive for the best we can do as a global society.

Detailed targets

The four targets include both interim and final targets and indicators and have received broad support among experts in the sector.

Target 1: By 2025, no one practices open defecation and inequalities in the practice of open defecation have been progressively eliminated.

Target 2: By 2030, everyone uses a basic drinking-water supply and handwashing facilities when at home, all schools and health centres provide all users with basic drinking-water supply and adequate sanitation, handwashing facilities and menstrual hygiene facilities and inequalities in access to each of these services have been progressively eliminated.



Target 3: By 2040, everyone uses adequate sanitation when at home, the proportion of the population not using an intermediate drinking-water supply service at home has been reduced by half, the excreta from at least half of schools, health centres and households with adequate sanitation are safely managed and inequalities in access to each of these services have been progressively reduced.

Target 4: All drinking-water supply, sanitation and hygiene services are delivered in a progressively affordable, accountable and financially and environmentally sustainable manner.

Scope of targets:

The targets are global, are outcome-focused and reflect a progressive realization of the human rights to water and sanitation. Based on the simple inspirational vision of the universal access to safe water, sanitation and hygiene, they focus on the poor, disadvantaged and those excluded at the individual and household level, as well as in schools and health centres. Pursuing the elimination of inequities and inequalities, the targets seek to both increase the number of people using water, sanitation and hygiene as well as progressively improve levels of service.

Format of targets:

There are between one and three targets per subsector, each with a set of accompanying indicators that are unambiguous, expressed in simple language to be as easily communicated as possible and without professional jargon. The targets are cohesive, each with clear and comprehensive definitions, expressed in terms of a set of dates by which various levels of inequality reduction and improvements in service levels and practices will have taken place, while respecting each subsector equally (not allowing one subsector to subsume another). As the target year of the future global development framework has not yet been set, a 25-year period is assumed, between 2015 and 2040.

Moving forward

During 2013, proposed indicators and their data sources will be further validated to ensure that the indicators robustly measure the proposed targets. Time permitting, the WHO/UNICEF Joint Monitoring Programme for Water Supply and Sanitation (JMP) intends to collect information on the indicators where data are available in order to be able to establish a credible baseline by 2015.

While the JMP is facilitating the technical process, a parallel political process has begun, with many groups reaching out to UN member states, championing WASH in the wider post-2015 discussions. No matter what framework is adopted for the post-2015 development agenda, these ambitious yet realistic targets can guide the way towards better water, sanitation and hygiene for all people and in doing so will help reduce poverty and achieve sustainable development.

The reports of the consultations held in Berlin and The Hague, along with the consolidated proposal document and the detailed reports of the four working groups, can all be downloaded from www.wssinfo.org/post-2015-monitoring/.

Some proposed definitions for post-2015

Basic drinking-water supply:

- Use of an improved drinking-water source*
- ≤ 30 minute water collection round trip

Intermediate drinking-water supply at home:

- Use of an improved drinking-water source on premises*
- Available in acceptable quantities at least 12 of the past 14 days
- Water quality of < 10 cfu (colony-forming units) of *E.Coli*/100ml

**for urban areas excluding protected dug wells and protected springs*

Adequate sanitation at home:

- Use of an improved sanitation facility at home
- Shared between five households or less

5.

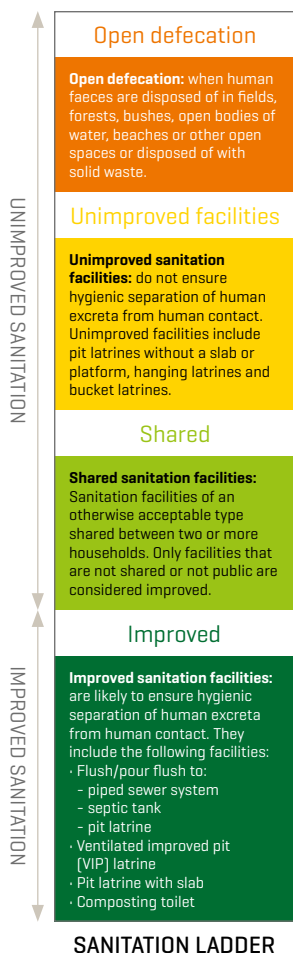
THE JMP METHOD

The JMP is tasked with providing estimates that are comparable among countries and across time. Because definitions of “improved” sanitation facilities and drinking-water sources can vary widely among countries, the JMP has established a standard set of categories that are used to analyse national data on which the MDG trends and estimates are based [see page margins for the categories and definitions of access to drinking-water and sanitation]. The population data used in this report, including the proportion of the population living in urban and rural areas, are those established by the UN Population Division [World Population Prospects: 2011 Revision]. The definitions and data sources used by the JMP are often different from those used by national governments. Estimates in this report may therefore differ from national estimates. According to the JMP, an improved drinking-water source is one that, by the nature of its construction, adequately protects the source from outside contamination, particularly faecal matter. An improved sanitation facility is one that hygienically separates human excreta from human contact. The coverage estimates for improved sanitation facilities presented in this report are discounted by the proportion of the population that shared an improved type of sanitation facility. The percentage of the population that shares a sanitation facility of an otherwise improved type is subtracted from the trend estimates of improved sanitation facilities. This is derived from the average of data from household surveys or censuses with such a ratio.

For each country, the JMP estimates are based on fitting a regression¹ line to a series of data points from household surveys and censuses. Because the regression involves retrofitting the entire time series, estimates may differ from and may not be comparable to earlier estimates for the same reference year [including the 1990 baseline year]. This is a result of adding newly available data and filling in missing data

for past years. Questions are often raised about the appropriateness of using a linear trend line. It can be argued that other types of curve-fitting procedures might better reflect the progression of coverage over time. However, the paucity of data points in many countries makes the use of more complex procedures inconsistent with good statistical practice. When MDG monitoring commenced, linear regression was deemed the best method for the limited amount of often poorly comparable data on file [some countries had as few as two data points for many years], especially given the relatively short time frame of the MDGs – 25 years is only a fraction of the time needed to go from no access to full coverage. Unfortunately, the current use of linear regression to derive estimates does not allow rapid changes in coverage to be captured. The increased availability of comparable data now allows for the exploration of more sophisticated modelling in preparation for a new, post-2015 drinking-water target.

Since the publication of the JMP 2012 progress report, 230 datasets from 117 countries have been added to the JMP database [see map on page 13]. The new estimates are based on almost 1700 datasets, nearly double the number of datasets on file five years ago. The JMP has benefited from the increased availability of household survey data on web sites of national statistics offices as well as from the survey repository of the International Household Survey Network hosted by the World Bank. Collaboration with the Secretariat of the Pacific Community resulted in an additional 20 datasets for the countries in Oceania, a region for which the JMP previously had few data. In total, 59 datasets from countries in Oceania were added to the JMP database, significantly increasing the robustness of estimates for that region. The table on page 13 gives a breakdown by region of the data added since the publication of the 2012 report, for the periods before and after the year 2000.



¹ Simple linear regression is used to estimate the proportion of the population using the following drinking-water sources:
 - Piped supplies on premises
 - Improved drinking-water sources
 - Surface water
 and sanitation facilities:
 - Improved types of sanitation facilities (including shared facilities of an improved type)
 - Open defecation
 The remaining population uses unimproved drinking-water sources and unimproved sanitation facilities, respectively.

For communication purposes in its report, the JMP displays these proportions as rounded integers, which together add to 100% for drinking-water and sanitation, respectively. For its database on the JMP web site (www.wssinfo.org), we use unrounded estimates to achieve greater accuracy when converting coverage estimates into numbers of people with or without access. Any “apparent” discrepancies between the published estimates and those derived from the JMP web site are due to the published estimates appearing rounded to the nearest integer.



The JMP 2013 report includes new data for 117 countries

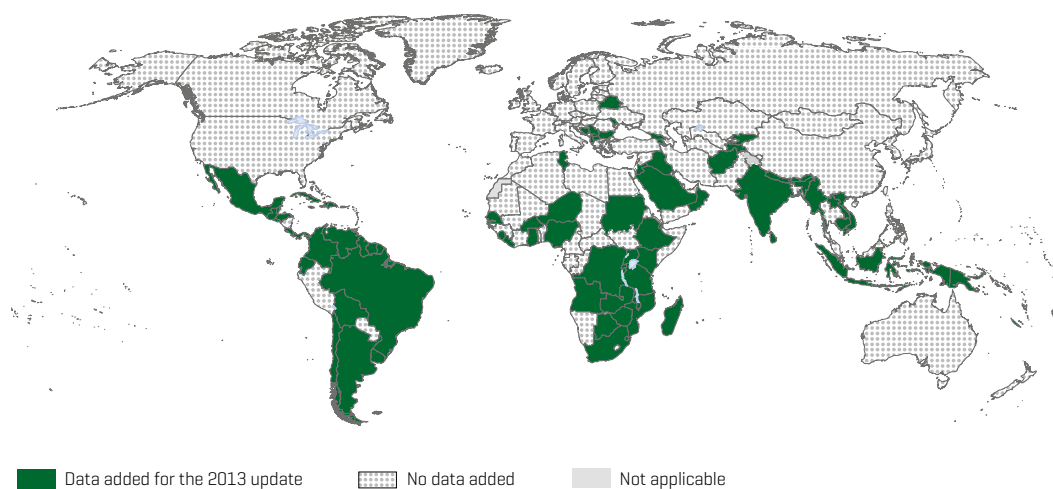
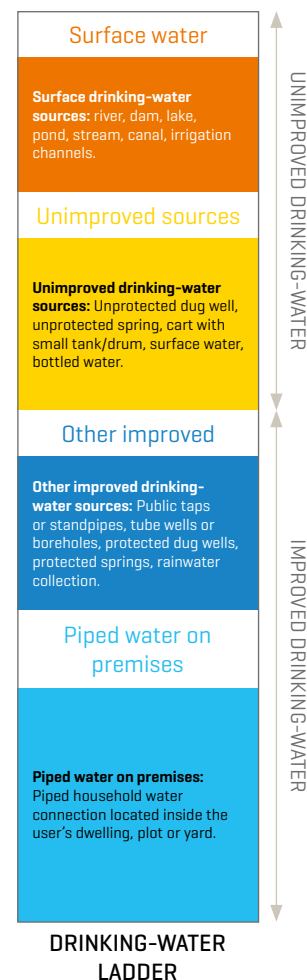


Figure 10. Countries where new data were added since the 2012 report.

Table 2. New datasets added to the JMP database since the publication of the JMP 2012 progress report.

Region	Number of pre-2000 datasets	Number of 2000–2007 datasets	Number of post-2007 datasets
Western Asia	1	5	3
Sub-Saharan Africa	5	4	33
South-eastern Asia	2	1	6
Southern Asia	0	3	9
Oceania	16	27	16
Northern Africa	0	0	1
Latin America and the Caribbean	15	28	32
Caucasus and Central Asia	2	1	3
Eastern Asia	0	0	0
Developed countries	0	10	7
Total	41	79	110



Country, area or territory	Year	Population (x 1000)	Percentage urban population	USE OF SANITATION FACILITIES (percentage of population)												Proportion of the 2011 population that gained access since 1995 [%]	
				URBAN				RURAL				NATIONAL					
				Unimproved				Unimproved				Unimproved					
				Improved	Shared	Unimproved	Open defecation	Improved	Shared	Unimproved	Open defecation	Improved	Shared	Unimproved	Open defecation		
Afghanistan	1990	13 032	18	-	-	-	-	-	-	-	-	-	-	-	-	-	-
	2000	22 856	21	32	14	43	11	21	7	40	32	23	9	40	28	16	16
	2011	32 358	24	46	20	34	0	23	8	48	21	28	11	45	16	16	16
Albania	1990	3 289	36	93	4	3	0	74	5	21	0	81	5	14	0	0	14
	2000	3 072	42	94	4	2	0	81	6	13	0	86	5	9	0	0	14
	2011	3 216	53	95	4	1	0	93	7	0	0	94	5	1	0	0	14
Algeria	1990	25 299	52	99	-	1	0	77	-	8	15	89	-	3	8	24	24
	2000	30 534	61	99	-	0	1	82	-	4	14	92	-	2	6	24	24
	2011	35 980	73	98	-	1	1	88	-	2	10	95	-	2	3	24	24
American Samoa	1990	47	81	-	-	-	-	-	-	-	-	97	-	3	-	-	23
	2000	58	89	-	-	-	-	-	-	-	-	97	-	3	-	-	23
	2011	70	93	-	-	-	-	-	-	-	-	97	-	3	-	-	23
Andorra	1990	53	95	100	0	0	0	100	0	0	0	100	0	0	0	0	25
	2000	65	92	100	0	0	0	100	0	0	0	100	0	0	0	0	25
	2011	86	87	100	0	0	0	100	0	0	0	100	0	0	0	0	25
Angola	1990	10 335	37	67	-	0	33	7	-	21	72	29	-	14	57	37	37
	2000	13 926	49	75	-	2	23	11	-	22	67	42	-	12	46	37	37
	2011	19 618	59	86	-	11	3	19	-	22	59	59	-	15	26	37	37
Anguilla	1990	8	100	-	-	-	-	NA	NA	NA	NA	-	-	-	-	-	41
	2000	11	100	92	-	6	2	NA	NA	NA	NA	92	-	6	2	41	41
	2011	16	100	98	-	0	2	NA	NA	NA	NA	98	-	0	2	41	41
Antigua and Barbuda	1990	62	35	-	-	-	-	-	-	-	-	75	-	20	5	30	30
	2000	78	32	-	-	-	-	-	-	-	-	85	-	13	2	30	30
	2011	90	30	-	-	-	-	-	-	-	-	91	-	9	0	30	30
Argentina	1990	32 642	87	89	2	9	0	68	1	31	0	87	2	11	0	20	20
	2000	36 931	90	93	2	5	0	83	1	16	0	92	2	6	0	20	20
	2011	40 765	93	96	2	2	0	98	2	0	0	96	2	2	0	20	20
Armenia	1990	3 545	67	95	3	2	0	-	-	-	-	-	-	-	-	-	NA*
	2000	3 076	65	96	3	1	0	77	3	20	0	89	3	8	0	NA*	NA*
	2011	3 100	64	96	3	1	0	81	3	16	0	90	3	7	0	NA*	NA*
Aruba	1990	62	50	-	-	-	-	-	-	-	-	99	-	0	1	25	25
	2000	90	47	-	-	-	-	-	-	-	-	98	-	1	1	25	25
	2011	108	47	-	-	-	-	-	-	-	-	98	-	1	1	25	25
Australia	1990	17 096	85	100	0	0	0	100	0	0	0	100	0	0	0	20	20
	2000	19 164	87	100	0	0	0	100	0	0	0	100	0	0	0	20	20
	2011	22 606	89	100	0	0	0	100	0	0	0	100	0	0	0	20	20
Austria	1990	7 671	66	100	0	0	0	100	0	0	0	100	0	0	0	6	6
	2000	8 005	66	100	0	0	0	100	0	0	0	100	0	0	0	6	6
	2011	8 413	68	100	0	0	0	100	0	0	0	100	0	0	0	6	6
Azerbaijan	1990	7 212	54	-	-	-	-	-	-	-	-	-	-	-	-	-	34
	2000	8 111	51	73	9	18	0	50	2	48	0	62	6	32	0	34	34
	2011	9 306	54	86	11	3	0	78	3	18	1	82	7	11	0	34	34
Bahamas	1990	256	80	-	-	-	-	-	-	-	-	-	-	-	-	-	-
	2000	298	82	-	-	-	-	-	-	-	-	88	5	6	1	-	-
	2011	347	84	-	-	-	-	-	-	-	-	-	-	-	-	-	-
Bahrain	1990	493	88	-	-	-	-	-	-	-	-	99	-	1	0	57	57
	2000	638	88	-	-	-	-	-	-	-	-	99	-	1	0	57	57
	2011	1 324	89	-	-	-	-	-	-	-	-	99	-	1	0	57	57
Bangladesh	1990	105 256	20	54	29	10	7	34	16	12	38	38	19	11	32	23	23
	2000	129 592	24	55	30	10	5	42	20	14	24	45	23	13	19	23	23
	2011	150 494	28	55	30	13	2	55	26	14	5	55	27	14	4	23	23
Barbados	1990	260	33	-	-	-	-	-	-	-	-	82	-	18	0	-	-
	2000	268	38	-	-	-	-	-	-	-	-	90	-	9	1	-	-
	2011	274	44	-	-	-	-	-	-	-	-	-	-	-	-	-	-
Belarus	1990	10 260	66	91	8	1	0	96	2	2	0	93	6	1	0	NA*	NA*
	2000	10 058	70	91	8	1	0	96	2	2	0	93	7	0	0	NA*	NA*
	2011	9 559	75	92	8	0	0	97	2	1	0	93	7	0	0	NA*	NA*
Belgium	1990	9 949	96	100	0	0	0	100	0	0	0	100	0	0	0	6	6
	2000	10 176	97	100	0	0	0	100	0	0	0	100	0	0	0	6	6
	2011	10 754	97	100	0	0	0	100	0	0	0	100	0	0	0	6	6

NA represents data not applicable. A dash [-] represents data not available at the time of publication. * Shown as NA for countries with a declining population over the period 1995–2011.

¹ For communication purposes in its report, the JMP displays these proportions as rounded integers, which together add to 100% for drinking-water and sanitation, respectively. For its database on the JMP web site (www.wssinfo.org), we use unrounded estimates to achieve greater accuracy when converting coverage estimates into numbers of people with or without access. Any "apparent" discrepancies between the published estimates and those derived from the JMP web site are due to the published estimates appearing rounded to the nearest integer.

Country, area or territory	Year	USE OF DRINKING-WATER SOURCES (percentage of population)														Proportion of the 2011 population that gained access since 1995 [%]	
		URBAN					RURAL					NATIONAL					
		Improved			Unimproved		Improved			Unimproved		Improved			Unimproved		
		Total improved	Piped on premises	Other improved	Unimproved	Surface water	Total improved	Piped on premises	Other improved	Unimproved	Surface water	Total improved	Piped on premises	Other improved	Unimproved		Surface water
Afghanistan	1990	-	3	-	-	-	3	0	3	49	48	-	1	-	-	-	58
	2000	36	10	26	54	10	18	0	18	45	37	22	2	20	47	31	
	2011	85	27	58	11	4	53	4	49	34	13	61	9	52	28	11	
Albania	1990	100	96	4	0	0	95	-	-	3	2	97	-	-	2	1	0
	2000	100	95	5	0	0	95	44	51	3	2	97	65	32	2	1	
	2011	95	91	4	5	0	94	71	23	6	0	95	82	13	5	0	
Algeria	1990	100	87	13	0	0	88	48	40	10	2	94	69	25	5	1	11
	2000	93	84	9	7	0	84	52	32	15	1	89	72	17	11	0	
	2011	85	80	5	15	0	79	56	23	20	1	84	74	10	16	0	
American Samoa	1990	-	-	-	-	-	-	-	-	-	-	94	65	29	6	-	26
	2000	-	-	-	-	-	-	-	-	-	-	100	79	21	0	0	
	2011	-	-	-	-	-	-	-	-	-	-	100	81	19	0	0	
Andorra	1990	100	100	0	0	0	100	100	0	0	0	100	100	0	0	0	25
	2000	100	100	0	0	0	100	100	0	0	0	100	100	0	0	0	
	2011	100	100	0	0	0	100	100	0	0	0	100	100	0	0	0	
Angola	1990	43	16	27	44	13	42	1	41	28	30	42	6	36	34	24	27
	2000	52	23	29	36	12	39	1	38	24	37	46	12	34	29	25	
	2011	66	33	33	31	3	35	1	34	15	50	53	20	33	25	22	
Anguilla	1990	-	-	-	-	-	NA	NA	NA	NA	NA	-	-	-	-	-	36
	2000	93	58	35	7	-	NA	NA	NA	NA	NA	93	58	35	7	-	
	2011	95	-	-	5	-	NA	NA	NA	NA	NA	95	-	-	5	-	
Antigua and Barbuda	1990	-	-	-	-	-	-	-	-	-	-	97	61	36	3	-	23
	2000	-	-	-	-	-	-	-	-	-	-	98	76	22	2	-	
	2011	-	-	-	-	-	-	-	-	-	-	98	86	12	2	-	
Argentina	1990	97	74	23	3	0	69	13	56	18	13	93	66	27	5	2	18
	2000	98	86	12	2	0	81	50	31	12	7	97	82	15	2	1	
	2011	100	99	1	0	0	95	90	5	0	5	99	98	1	1	0	
Armenia	1990	98	95	3	2	0	-	52	-	-	-	-	81	-	-	-	5
	2000	99	96	3	1	0	82	68	14	18	0	93	86	7	7	0	
	2011	100	98	2	0	0	98	91	7	2	0	99	96	3	1	0	
Aruba	1990	-	-	-	-	-	-	-	-	-	-	91	90	1	9	0	29
	2000	-	-	-	-	-	-	-	-	-	-	94	91	3	6	0	
	2011	-	-	-	-	-	-	-	-	-	-	98	93	5	2	0	
Australia	1990	100	-	-	0	0	100	-	-	0	0	100	-	-	0	0	20
	2000	100	-	-	0	0	100	-	-	0	0	100	-	-	0	0	
	2011	100	-	-	0	0	100	-	-	0	0	100	-	-	0	0	
Austria	1990	100	100	0	0	0	100	100	0	0	0	100	100	0	0	0	6
	2000	100	100	0	0	0	100	100	0	0	0	100	100	0	0	0	
	2011	100	100	0	0	0	100	100	0	0	0	100	100	0	0	0	
Azerbaijan	1990	88	67	21	11	1	49	17	32	33	18	70	44	26	21	9	21
	2000	88	72	16	11	1	59	18	41	24	17	74	46	28	17	9	
	2011	88	78	10	10	2	71	20	51	13	16	80	51	29	12	8	
Bahamas	1990	-	-	-	-	-	-	-	-	-	-	-	-	-	-	-	19
	2000	-	-	-	-	-	-	-	-	-	-	96	93	3	4	-	
	2011	-	-	-	-	-	-	-	-	-	-	96	-	-	4	-	
Bahrain	1990	-	-	-	-	-	-	-	-	-	-	95	39	56	5	-	59
	2000	-	-	-	-	-	-	-	-	-	-	99	92	7	1	-	
	2011	-	-	-	-	-	-	-	-	-	-	100	100	0	0	0	
Bangladesh	1990	87	24	63	13	0	74	0	74	22	4	76	5	71	21	3	23
	2000	86	27	59	14	0	77	0	77	20	3	79	7	72	19	2	
	2011	85	31	54	14	1	82	1	81	16	2	83	10	73	16	1	
Barbados	1990	-	-	-	-	-	-	-	-	-	-	95	94	1	5	-	6
	2000	-	-	-	-	-	-	-	-	-	-	99	96	3	1	-	
	2011	-	-	-	-	-	-	-	-	-	-	100	97	3	0	0	
Belarus	1990	100	-	-	0	0	99	-	-	1	0	100	-	-	0	0	NA*
	2000	100	90	10	0	0	99	31	68	1	0	100	72	28	0	0	
	2011	100	95	5	0	0	99	79	20	1	0	100	91	9	0	0	
Belgium	1990	100	100	0	0	0	100	96	4	0	0	100	100	0	0	0	6
	2000	100	100	0	0	0	100	99	1	0	0	100	100	0	0	0	
	2011	100	100	0	0	0	100	100	0	0	0	100	100	0	0	0	

NA represents data not applicable. A dash [-] represents data not available at the time of publication. * Shown as NA for countries with a declining population over the period 1995–2011.

Country, area or territory	Year	Population (x 1000)	Percentage urban population	USE OF SANITATION FACILITIES (percentage of population)												Proportion of the 2011 population that gained access since 1995 [%]
				URBAN				RURAL				NATIONAL				
				Unimproved				Unimproved				Unimproved				
				Improved	Shared	Unimproved	Open defecation	Improved	Shared	Unimproved	Open defecation	Improved	Shared	Unimproved	Open defecation	
Belize	1990	190	47	76	6	14	4	76	6	9	9	76	6	11	7	35
	2000	251	48	85	6	7	2	81	6	7	6	83	6	7	4	
	2011	318	45	93	7	0	0	87	7	3	3	90	7	2	1	
Benin	1990	4 773	34	14	20	14	52	0	1	3	96	5	7	8	80	10
	2000	6 518	38	19	28	13	40	3	6	4	87	9	15	7	69	
	2011	9 100	45	25	37	11	27	5	12	7	76	14	23	9	54	
Bermuda	1990	60	100	-	-	-	-	NA	NA	NA	NA	-	-	-	-	-
	2000	63	100	-	-	-	-	NA	NA	NA	NA	-	-	-	-	
	2011	65	100	-	-	-	-	NA	NA	NA	NA	-	-	-	-	
Bhutan	1990	559	16	-	-	-	-	-	-	-	-	-	-	-	-	-
	2000	571	25	66	19	10	5	30	28	30	12	39	26	24	11	
	2011	738	36	74	21	5	0	29	28	38	5	45	26	26	3	
Bolivia (Plurinational State of)	1990	6 658	56	41	20	14	25	12	3	13	72	28	12	14	46	22
	2000	8 307	62	49	24	11	16	18	4	16	62	37	16	13	34	
	2011	10 088	67	57	28	10	5	24	5	22	49	46	20	15	19	
Bosnia and Herzegovina	1990	4 308	39	98	0	1	1	-	-	-	-	-	-	-	-	11
	2000	3 694	43	98	0	2	0	93	1	5	1	95	1	3	1	
	2011	3 752	48	100	0	0	0	92	1	7	0	96	0	4	0	
Botswana	1990	1 382	42	61	5	23	11	22	6	20	52	39	5	21	35	28
	2000	1 758	53	70	6	18	6	32	8	17	43	52	7	18	23	
	2011	2 031	62	78	6	16	0	42	11	12	35	64	8	15	13	
Brazil	1990	149 650	74	79	1	14	6	31	1	20	48	67	1	15	17	23
	2000	174 425	81	83	1	13	3	39	1	26	34	75	1	15	9	
	2011	196 655	85	87	1	11	1	48	1	33	18	81	1	14	4	
British Virgin Islands	1990	16	38	-	-	-	-	-	-	-	-	98	-	1	1	21
	2000	20	39	-	-	-	-	-	-	-	-	98	-	1	1	
	2011	23	41	-	-	-	-	-	-	-	-	98	-	1	1	
Brunei Darussalam	1990	252	66	-	-	-	-	-	-	-	-	-	-	-	-	-
	2000	327	71	-	-	-	-	-	-	-	-	-	-	-	-	
	2011	406	76	-	-	-	-	-	-	-	-	-	-	-	-	
Bulgaria	1990	8 819	66	100	0	0	0	99	0	1	0	99	0	1	0	NA*
	2000	8 006	69	100	0	0	0	99	0	1	0	100	0	0	0	
	2011	7 446	73	100	0	0	0	100	0	0	0	100	0	0	0	
Burkina Faso	1990	9 324	14	44	32	13	11	2	3	6	89	8	7	7	78	12
	2000	12 294	18	47	33	10	10	4	6	7	83	12	11	7	70	
	2011	16 968	27	50	36	5	9	6	9	10	75	18	16	8	58	
Burundi	1990	5 602	6	33	26	40	1	42	5	50	3	42	6	49	3	19
	2000	6 374	8	38	31	30	1	46	5	46	3	46	7	44	3	
	2011	8 575	11	45	36	17	2	51	6	40	3	50	9	38	3	
Cambodia	1990	9 532	16	36	5	9	50	3	1	6	90	9	1	6	84	25
	2000	12 447	19	50	7	6	37	10	2	6	82	18	3	5	74	
	2011	14 305	20	76	10	1	13	22	5	4	69	33	6	3	58	
Cameroon	1990	12 181	40	63	20	15	2	37	8	38	17	47	13	29	11	15
	2000	15 678	46	61	19	19	1	37	8	40	15	48	13	30	9	
	2011	20 030	52	58	18	23	1	36	8	44	12	48	13	33	6	
Canada	1990	27 701	77	100	0	0	0	99	-	1	-	100	-	0	0	15
	2000	30 667	79	100	0	0	0	99	-	1	-	100	-	0	0	
	2011	34 350	81	100	0	0	0	99	-	1	-	100	-	0	0	
Cape Verde	1990	348	44	-	-	-	-	-	-	-	-	-	-	-	-	34
	2000	437	53	61	-	12	27	25	-	17	58	44	-	15	41	
	2011	501	63	74	-	8	18	45	-	13	42	63	-	10	27	
Cayman Islands	1990	26	100	96	-	4	-	NA	NA	NA	NA	96	-	4	-	41
	2000	40	100	96	-	4	-	NA	NA	NA	NA	96	-	4	-	
	2011	57	100	96	-	4	-	NA	NA	NA	NA	96	-	4	-	
Central African Republic	1990	2 935	37	21	12	57	10	5	2	44	49	11	6	49	34	23
	2000	3 702	38	32	18	44	6	16	8	36	40	22	12	39	27	
	2011	4 487	39	43	24	30	3	28	14	27	31	34	18	28	20	
Chad	1990	6 011	21	21	12	42	25	4	1	2	93	8	3	10	79	6
	2000	8 222	22	26	15	39	20	5	1	7	87	10	4	14	72	
	2011	11 525	22	31	18	37	14	6	1	13	80	12	5	18	65	
Chile	1990	13 188	83	91	-	5	4	53	-	41	6	85	-	10	5	25
	2000	15 420	86	95	-	2	3	70	-	26	4	92	-	5	3	
	2011	17 270	89	100	-	0	0	89	-	9	2	99	-	1	0	
China	1990	1 145 195	26	48	15	34	3	15	4	72	9	24	7	62	7	34
	2000	1 269 117	36	61	20	18	1	35	9	51	5	45	13	38	4	
	2011	1 347 565	51	74	24	2	0	56	14	28	2	65	19	15	1	

Country, area or territory	Year	USE OF DRINKING-WATER SOURCES (percentage of population)														Proportion of the 2011 population that gained access since 1995 [%]	
		URBAN					RURAL					NATIONAL					
		Improved			Unimproved		Improved			Unimproved		Improved			Unimproved		
		Total improved	Piped on premises	Other improved	Unimproved	Surface water	Total improved	Piped on premises	Other improved	Unimproved	Surface water	Total improved	Piped on premises	Other improved	Unimproved		Surface water
Belize	1990	88	74	14	12	0	59	20	39	30	11	73	46	27	21	6	44
	2000	92	80	12	8	0	79	44	35	15	6	85	61	24	12	3	
	2011	97	86	11	2	1	100	69	31	0	0	99	77	22	1	0	
Benin	1990	72	16	56	19	9	49	0	49	22	29	57	5	52	21	22	38
	2000	78	23	55	17	5	59	2	57	23	18	66	10	56	21	13	
	2011	85	32	53	13	2	69	4	65	25	6	76	16	60	20	4	
Bermuda	1990	-	-	-	-	-	NA	NA	NA	NA	NA	-	-	-	-	-	-
	2000	-	-	-	-	-	NA	NA	NA	NA	NA	-	-	-	-	-	
	2011	-	-	-	-	-	NA	NA	NA	NA	NA	-	-	-	-	-	
Bhutan	1990	99	-	-	0	1	-	-	-	-	-	-	-	-	-	-	-
	2000	99	81	18	0	1	82	45	37	4	14	86	54	32	3	11	
	2011	100	81	19	0	0	96	44	52	0	4	97	57	40	1	2	
Bolivia (Plurinational State of)	1990	91	79	12	8	1	41	12	29	19	40	69	49	20	12	19	33
	2000	93	87	6	6	1	56	33	23	12	32	79	66	13	8	13	
	2011	96	95	1	4	0	72	57	15	5	23	88	83	5	4	8	
Bosnia and Herzegovina	1990	99	96	3	1	0	96	-	-	4	0	97	-	-	3	0	12
	2000	99	96	3	1	0	96	77	19	4	0	98	85	13	2	0	
	2011	100	94	6	0	0	98	71	27	2	0	99	82	17	1	0	
Botswana	1990	100	39	61	0	0	86	10	76	6	8	92	22	70	3	5	24
	2000	99	64	35	1	0	90	24	66	4	6	95	46	49	2	3	
	2011	99	90	9	1	0	93	38	55	3	4	97	70	27	1	2	
Brazil	1990	96	92	4	4	0	68	39	29	18	14	88	78	10	8	4	22
	2000	98	94	4	2	0	76	51	25	15	9	93	86	7	5	2	
	2011	100	96	4	0	0	84	65	19	12	4	97	92	5	2	1	
British Virgin Islands	1990	-	-	-	-	-	-	-	-	-	-	-	-	-	-	-	-
	2000	-	-	-	-	-	-	-	-	-	-	95	75	20	5	-	
	2011	-	-	-	-	-	-	-	-	-	-	-	-	-	-	-	
Brunei Darussalam	1990	-	-	-	-	-	-	-	-	-	-	-	-	-	-	-	-
	2000	-	-	-	-	-	-	-	-	-	-	-	-	-	-	-	
	2011	-	-	-	-	-	-	-	-	-	-	-	-	-	-	-	
Bulgaria	1990	100	96	4	0	0	100	67	33	0	0	100	86	14	0	0	NA*
	2000	100	97	3	0	0	99	77	22	0	1	100	91	9	0	0	
	2011	100	98	2	0	0	99	92	7	0	1	99	97	2	1	0	
Burkina Faso	1990	75	11	64	24	1	39	0	39	51	10	44	2	42	48	8	48
	2000	85	18	67	15	0	55	0	55	37	8	60	3	57	34	6	
	2011	96	26	70	4	0	74	0	74	21	5	80	7	73	16	4	
Burundi	1990	97	32	65	1	2	68	1	67	23	9	69	3	66	23	8	24
	2000	90	39	51	7	3	70	1	69	18	12	72	4	68	17	11	
	2011	82	46	36	13	5	73	1	72	12	15	74	6	68	12	14	
Cambodia	1990	48	16	32	30	22	28	0	28	36	36	31	2	29	35	34	41
	2000	63	33	30	22	15	40	2	38	31	29	44	8	36	29	27	
	2011	90	65	25	7	3	61	5	56	21	18	67	17	50	18	15	
Cameroon	1990	76	23	53	11	13	31	2	29	17	52	49	10	39	14	37	36
	2000	86	25	61	8	6	42	2	40	18	40	62	12	50	13	25	
	2011	95	26	69	4	1	52	3	49	18	30	74	15	59	12	14	
Canada	1990	100	100	0	0	0	99	-	-	1	-	100	-	-	0	0	15
	2000	100	100	0	0	0	99	38	61	1	-	100	87	13	0	0	
	2011	100	100	0	0	0	99	-	-	1	-	100	-	-	0	0	
Cape Verde	1990	-	-	-	-	-	0	-	-	-	-	-	-	-	-	-	25
	2000	84	42	42	16	0	81	8	73	18	1	83	26	57	16	1	
	2011	91	59	32	9	0	86	43	43	14	0	89	53	36	11	0	
Cayman Islands	1990	-	-	-	-	-	NA	NA	NA	NA	NA	-	-	-	-	-	42
	2000	93	73	20	7	-	NA	NA	NA	NA	NA	93	73	20	7	-	
	2011	96	87	9	4	-	NA	NA	NA	NA	NA	96	87	9	4	-	
Central African Republic	1990	78	8	70	20	2	47	0	47	34	19	58	3	55	29	13	23
	2000	85	7	78	14	1	49	0	49	38	13	63	3	60	29	8	
	2011	92	6	86	7	1	51	0	51	43	6	67	3	64	29	4	
Chad	1990	49	7	42	48	3	37	0	37	47	16	40	2	38	46	14	24
	2000	60	15	45	38	2	41	0	41	49	10	45	4	41	46	9	
	2011	71	24	47	29	0	44	1	43	52	4	50	6	44	47	3	
Chile	1990	99	97	2	1	0	47	29	18	40	13	90	86	4	8	2	21
	2000	99	98	1	1	0	67	42	25	16	17	95	90	5	2	3	
	2011	100	99	1	0	0	90	56	34	10	-	98	95	3	2	-	
China	1990	97	92	5	2	1	56	12	44	34	10	67	33	34	26	7	25
	2000	98	93	5	1	1	70	28	42	24	6	80	52	28	16	4	
	2011	98	95	3	2	0	85	45	40	13	2	92	70	22	7	1	

Country, area or territory	Year	Population (x 1000)	Percentage urban population	USE OF SANITATION FACILITIES (percentage of population)												Proportion of the 2011 population that gained access since 1995 (%)
				URBAN				RURAL				NATIONAL				
				Improved	Unimproved			Improved	Unimproved			Improved	Unimproved			
					Shared	Unimproved	Open defecation		Shared	Unimproved	Open defecation		Shared	Unimproved	Open defecation	
Colombia	1990	33 203	68	79	14	3	4	40	4	13	43	67	11	6	16	24
	2000	39 764	72	81	14	2	3	52	5	12	31	73	12	5	10	
	2011	46 927	75	82	15	1	2	65	6	11	18	78	13	3	6	
Comoros	1990	438	28	34	2	64	0	11	1	88	0	18	1	81	0	-
	2000	562	28	42	2	56	0	23	2	74	1	28	2	69	1	
	2011	754	28	-	-	-	-	-	-	-	-	-	-	-	-	
Congo	1990	2 389	54	-	-	-	-	-	-	-	-	-	-	-	-	-
	2000	3 136	59	21	42	35	2	18	30	34	18	20	37	34	9	
	2011	4 140	64	19	39	39	3	15	25	43	17	18	34	40	8	
Cook Islands	1990	18	58	-	-	-	-	-	-	-	-	100	-	0	0	5
	2000	18	65	-	-	-	-	-	-	-	-	100	-	0	0	
	2011	20	74	-	-	-	-	-	-	-	-	95	-	4	1	
Costa Rica	1990	3 070	51	93	4	2	1	83	4	9	4	88	4	6	2	28
	2000	3 919	59	94	4	1	1	87	4	7	2	91	4	4	1	
	2011	4 727	65	95	4	1	0	92	4	4	0	94	4	2	0	
Côte d'Ivoire	1990	12 518	39	38	25	31	6	8	8	28	56	20	15	29	36	9
	2000	16 582	44	37	24	33	6	10	10	27	53	22	16	30	32	
	2011	20 153	51	36	23	35	6	11	12	27	50	24	18	31	27	
Croatia	1990	4 517	54	99	1	0	0	98	1	0	1	98	1	1	0	NA*
	2000	4 506	56	99	1	0	0	98	1	0	1	98	1	1	0	
	2011	4 396	58	99	1	0	0	98	1	0	1	98	1	1	0	
Cuba	1990	10 570	73	86	4	9	1	68	5	22	5	81	5	12	2	11
	2000	11 104	76	90	4	5	1	77	6	12	5	87	5	6	2	
	2011	11 254	75	94	5	1	0	87	6	5	2	92	5	2	1	
Cyprus	1990	767	67	100	0	0	0	100	0	0	0	100	0	0	0	23
	2000	943	69	100	0	0	0	100	0	0	0	100	0	0	0	
	2011	1 117	70	100	0	0	0	100	0	0	0	100	0	0	0	
Czech Republic	1990	10 303	75	100	0	0	0	100	0	0	0	100	0	0	0	2
	2000	10 243	74	100	0	0	0	100	0	0	0	100	0	0	0	
	2011	10 534	73	100	0	0	0	100	0	0	0	100	0	0	0	
Democratic People's Republic of Korea	1990	20 143	58	-	-	-	-	-	-	-	-	-	-	-	-	34
	2000	22 894	59	65	5	30	-	55	2	43	-	61	3	36	-	
	2011	24 451	60	88	6	6	-	73	3	24	-	82	5	13	-	
Democratic Republic of the Congo	1990	36 406	28	32	27	36	5	11	5	61	23	17	11	54	18	19
	2000	49 626	29	31	26	39	4	19	8	55	18	23	13	50	14	
	2011	67 758	34	29	25	45	1	31	13	43	13	31	17	43	9	
Denmark	1990	5 141	85	100	0	0	0	100	0	0	0	100	0	0	0	6
	2000	5 340	85	100	0	0	0	100	0	0	0	100	0	0	0	
	2011	5 573	87	100	0	0	0	100	0	0	0	100	0	0	0	
Djibouti	1990	562	76	69	5	16	10	39	5	6	50	62	5	14	19	18
	2000	732	77	71	5	17	7	33	4	12	51	62	5	16	17	
	2011	906	77	73	6	19	2	22	3	21	54	61	5	20	14	
Dominica	1990	71	68	-	-	-	-	-	-	-	-	-	-	-	-	-
	2000	70	67	80	-	2	18	84	-	2	14	81	-	2	17	
	2011	68	67	-	-	-	-	-	-	-	-	-	-	-	-	
Dominican Republic	1990	7 195	55	82	10	5	3	61	11	8	20	73	11	6	10	23
	2000	8 592	62	84	11	2	3	67	13	7	13	78	11	4	7	
	2011	10 056	70	86	11	1	2	74	14	5	7	82	12	3	3	
Ecuador	1990	10 261	55	86	2	5	7	49	2	11	38	69	2	8	21	34
	2000	12 345	60	91	3	2	4	67	3	5	25	81	3	3	13	
	2011	14 666	67	96	3	0	1	86	4	0	10	93	3	0	4	
Egypt	1990	56 843	43	91	3	5	1	57	4	22	17	72	4	14	10	36
	2000	67 648	43	95	3	1	1	79	5	9	7	86	4	6	4	
	2011	82 537	43	97	3	0	0	93	7	0	0	95	5	0	0	
El Salvador	1990	5 333	49	70	8	18	4	31	3	32	34	50	5	26	19	19
	2000	5 940	59	75	8	14	3	42	4	32	22	61	7	22	10	
	2011	6 227	65	79	9	10	2	53	5	33	9	70	8	18	4	
Equatorial Guinea	1990	374	35	-	-	-	-	-	-	-	-	-	-	-	-	-
	2000	520	39	92	-	8	-	87	-	13	-	89	-	11	-	
	2011	720	39	-	-	-	-	-	-	-	-	-	-	-	-	
Eritrea	1990	3 158	16	58	-	10	32	0	-	0	100	9	-	2	89	-
	2000	3 668	18	54	-	8	38	2	-	1	97	11	-	2	87	
	2011	5 415	21	-	-	-	-	4	-	0	96	-	-	-	-	
Estonia	1990	1 568	71	96	4	0	0	94	6	0	0	96	4	0	0	NA*
	2000	1 371	69	96	4	0	0	94	6	0	0	95	4	1	0	
	2011	1 341	69	100	-	0	0	94	6	0	0	100	-	0	0	

Country, area or territory	Year	USE OF DRINKING-WATER SOURCES (percentage of population)														Proportion of the 2011 population that gained access since 1995 [%]	
		URBAN					RURAL					NATIONAL					
		Improved			Unimproved		Improved			Unimproved		Improved			Unimproved		
		Total improved	Piped on premises	Other improved	Unimproved	Surface water	Total improved	Piped on premises	Other improved	Unimproved	Surface water	Total improved	Piped on premises	Other improved	Unimproved		Surface water
Colombia	1990	97	96	1	3	0	70	58	12	13	17	88	84	4	6	6	23
	2000	98	96	2	2	0	71	60	11	10	19	91	86	5	3	6	
	2011	100	97	3	0	0	72	61	11	6	22	93	88	5	2	5	
Comoros	1990	98	31	67	1	1	83	10	73	7	10	87	16	71	6	7	-
	2000	93	45	48	6	1	92	17	75	5	3	92	25	67	6	2	
	2011	-	-	-	-	-	97	-	-	3	0	-	-	-	-	-	
Congo	1990	95	-	-	4	1	-	4	-	-	-	-	-	-	-	-	-
	2000	95	46	49	4	1	36	4	32	52	12	71	28	43	23	6	
	2011	95	35	60	5	0	32	2	30	37	31	72	23	49	17	11	
Cook Islands	1990	-	-	-	-	-	-	-	-	-	-	100	-	-	0	0	10
	2000	-	-	-	-	-	-	-	-	-	-	100	72	28	0	0	
	2011	-	-	-	-	-	-	-	-	-	-	100	72	28	0	0	
Costa Rica	1990	99	93	6	1	0	87	73	14	5	8	93	83	10	3	4	27
	2000	99	97	2	1	0	89	80	9	4	7	95	90	5	2	3	
	2011	100	100	0	0	0	91	88	3	4	5	96	96	0	2	2	
Côte d'Ivoire	1990	90	50	40	10	0	67	5	62	17	16	76	23	53	14	10	24
	2000	91	57	34	9	0	67	10	57	23	10	78	31	47	16	6	
	2011	91	64	27	8	1	68	16	52	28	4	80	40	40	18	2	
Croatia	1990	100	96	4	0	0	97	-	-	2	1	98	-	-	2	0	NA*
	2000	100	96	4	0	0	97	77	20	2	1	98	87	11	2	0	
	2011	100	96	4	0	0	97	-	-	2	1	99	-	-	1	0	
Cuba	1990	94	77	17	6	0	-	-	-	-	-	-	-	-	-	-	7
	2000	95	80	15	5	0	77	45	32	21	2	91	71	20	8	1	
	2011	96	83	13	4	0	86	57	29	11	3	94	76	18	5	1	
Cyprus	1990	100	100	0	0	0	100	100	0	0	0	100	100	0	0	0	23
	2000	100	100	0	0	0	100	100	0	0	0	100	100	0	0	0	
	2011	100	100	0	0	0	100	100	0	0	0	100	100	0	0	0	
Czech Republic	1990	100	97	3	0	0	100	-	-	0	0	100	-	-	0	0	2
	2000	100	97	3	0	0	100	91	9	0	0	100	95	5	0	0	
	2011	100	97	3	0	0	100	-	-	0	0	100	-	-	0	0	
Democratic People's Republic of Korea	1990	100	-	-	0	0	100	-	-	0	0	100	-	-	0	0	9
	2000	100	81	19	0	0	99	72	27	0	1	100	77	23	0	0	
	2011	99	94	5	0	1	97	80	17	0	3	98	89	9	0	2	
Democratic Republic of the Congo	1990	88	49	39	11	1	26	1	25	41	33	43	14	29	33	24	18
	2000	85	38	47	13	2	27	1	26	43	30	44	12	32	35	21	
	2011	80	22	58	17	3	29	1	28	47	24	46	8	38	37	17	
Denmark	1990	100	100	0	0	0	100	100	0	0	0	100	100	0	0	0	6
	2000	100	100	0	0	0	100	100	0	0	0	100	100	0	0	0	
	2011	100	100	0	0	0	100	100	0	0	0	100	100	0	0	0	
Djibouti	1990	81	67	14	19	0	56	13	43	38	6	75	54	21	23	2	40
	2000	88	73	15	12	0	60	11	49	34	6	82	58	24	16	2	
	2011	100	79	21	0	0	67	9	58	32	1	92	63	29	8	0	
Dominica	1990	96	-	-	4	-	-	-	-	-	-	-	-	-	-	-	-
	2000	96	78	18	4	-	92	49	43	8	-	94	68	26	6	-	
	2011	96	-	-	4	-	-	-	-	-	-	-	-	-	-	-	
Dominican Republic	1990	99	95	4	1	0	77	47	30	11	12	89	74	15	5	6	13
	2000	91	85	6	9	0	79	49	30	14	7	86	71	15	11	3	
	2011	82	75	7	18	0	81	50	31	16	3	82	67	15	17	1	
Ecuador	1990	83	69	14	16	1	69	34	35	13	18	76	53	23	15	9	30
	2000	89	81	8	10	1	75	50	25	9	16	84	69	15	9	7	
	2011	96	95	1	4	0	82	68	14	4	14	92	86	6	3	5	
Egypt	1990	96	90	6	4	0	90	39	51	7	3	93	61	32	5	2	28
	2000	98	95	3	2	0	95	66	29	4	1	96	78	18	3	1	
	2011	100	100	0	0	0	99	93	6	1	0	99	96	3	1	0	
El Salvador	1990	92	69	23	7	1	57	16	41	35	8	74	42	32	22	4	17
	2000	93	77	16	7	0	69	32	37	26	5	83	59	24	15	2	
	2011	94	85	9	6	0	81	48	33	18	1	90	72	18	9	1	
Equatorial Guinea	1990	-	-	-	-	-	-	1	-	-	-	-	-	-	-	-	-
	2000	66	10	56	26	8	42	1	41	5	53	51	4	47	13	36	
	2011	-	-	-	-	-	-	1	-	-	-	-	-	-	-	-	
Eritrea	1990	62	40	22	37	1	39	0	39	34	27	43	6	37	34	23	-
	2000	70	42	28	30	0	50	0	50	37	13	54	7	47	35	11	
	2011	-	-	-	-	-	0	-	-	-	-	-	-	-	-	-	
Estonia	1990	99	92	7	1	0	97	51	46	3	0	99	80	19	1	0	NA*
	2000	99	95	4	1	0	97	65	32	3	0	99	86	13	1	0	
	2011	99	97	2	1	0	97	-	-	3	0	99	-	-	1	0	

Country, area or territory	Year	Population (x 1000)	Percentage urban population	USE OF SANITATION FACILITIES (percentage of population)												Proportion of the 2011 population that gained access since 1995 [%]
				URBAN				RURAL				NATIONAL				
				Unimproved		Unimproved		Unimproved		Unimproved		Unimproved		Unimproved		
				Improved	Shared	Unimproved	Open defecation	Improved	Shared	Unimproved	Open defecation	Improved	Shared	Unimproved	Open defecation	
Ethiopia	1990	48 333	13	19	28	12	41	0	0	0	100	2	4	1	93	19
	2000	65 578	15	22	34	17	27	6	2	7	85	8	7	8	77	
	2011	84 734	17	27	42	23	8	19	6	22	53	21	12	22	45	
Fiji	1990	728	42	85	4	10	1	37	2	52	9	57	3	35	5	28
	2000	812	48	89	4	7	0	61	3	32	4	74	4	20	2	
	2011	868	52	92	4	4	0	82	4	14	0	87	4	9	0	
Finland	1990	4 986	79	100	0	0	0	100	0	0	0	100	0	0	0	5
	2000	5 173	82	100	0	0	0	100	0	0	0	100	0	0	0	
	2011	5 385	84	100	0	0	0	100	0	0	0	100	0	0	0	
France	1990	56 708	74	100	0	0	0	100	0	0	0	100	0	0	0	8
	2000	59 048	77	100	0	0	0	100	0	0	0	100	0	0	0	
	2011	63 126	86	100	0	0	0	100	0	0	0	100	0	0	0	
French Guiana	1990	117	75	-	-	-	-	-	-	-	-	-	-	-	-	46
	2000	165	75	87	-	13	-	60	-	40	-	80	-	20	-	
	2011	237	76	95	-	5	-	76	-	24	-	90	-	10	-	
French Polynesia	1990	195	56	-	-	-	-	-	-	-	-	99	-	0	1	19
	2000	238	52	-	-	-	-	-	-	-	-	98	-	0	2	
	2011	274	51	-	-	-	-	-	-	-	-	97	-	1	2	
Gabon	1990	929	69	-	-	-	-	-	-	-	-	-	-	-	-	7
	2000	1 235	80	37	40	21	2	30	24	41	5	36	37	24	3	
	2011	1 534	86	33	36	30	1	30	25	43	2	33	34	32	1	
Gambia	1990	966	38	-	-	-	-	-	-	-	-	-	-	-	-	29
	2000	1 297	49	67	24	8	1	60	14	18	8	63	19	13	5	
	2011	1 776	57	70	25	5	0	65	15	15	5	68	21	9	2	
Georgia	1990	5 460	55	97	3	0	0	96	1	1	2	96	2	1	1	NA*
	2000	4 746	53	96	3	1	0	94	1	3	2	95	2	2	1	
	2011	4 329	53	96	3	1	0	91	1	6	2	93	2	4	1	
Germany	1990	79 098	73	100	0	0	0	100	0	0	0	100	0	0	0	0
	2000	82 349	73	100	0	0	0	100	0	0	0	100	0	0	0	
	2011	82 163	74	100	0	0	0	100	0	0	0	100	0	0	0	
Ghana	1990	14 793	36	12	45	32	11	3	19	49	29	6	29	42	23	8
	2000	19 165	44	15	59	17	9	6	32	31	31	10	44	25	21	
	2011	24 966	52	19	72	3	6	8	44	16	32	13	59	10	18	
Greece	1990	10 161	59	100	0	0	0	93	-	0	7	97	-	1	2	7
	2000	10 987	60	99	-	1	0	96	-	0	4	98	-	1	1	
	2011	11 390	61	99	-	1	0	97	-	1	2	99	-	0	1	
Greenland	1990	56	80	100	0	0	0	100	0	0	0	100	0	0	0	3
	2000	56	82	100	0	0	0	100	0	0	0	100	0	0	0	
	2011	57	85	100	0	0	0	100	0	0	0	100	0	0	0	
Grenada	1990	96	33	-	-	-	-	-	-	-	-	-	-	-	-	-
	2000	102	36	-	-	-	-	-	-	-	-	92	8	0	-	
	2011	105	39	-	-	-	-	-	-	-	-	-	-	-	-	
Guadeloupe	1990	386	99	-	-	-	-	-	-	-	-	-	-	-	-	-
	2000	427	98	94	-	6	-	-	-	-	-	-	-	-	-	
	2011	463	98	97	-	3	-	90	-	10	-	97	-	3	-	
Guam	1990	134	91	-	-	-	-	-	-	-	-	97	-	3	0	20
	2000	155	93	-	-	-	-	-	-	-	-	97	-	3	0	
	2011	182	93	-	-	-	-	-	-	-	-	97	-	3	0	
Guatemala	1990	8 923	41	81	9	5	5	49	4	13	34	62	6	10	22	35
	2000	11 237	45	85	9	3	3	60	5	13	22	71	7	8	14	
	2011	14 757	50	88	10	0	2	72	6	12	10	80	8	6	6	
Guinea	1990	5 759	28	19	23	52	6	6	4	35	55	10	9	40	41	10
	2000	8 344	31	26	32	39	3	9	5	44	42	14	13	43	30	
	2011	10 222	35	32	40	27	1	11	6	53	30	18	18	44	20	
Guinea-Bissau	1990	1 017	28	-	-	-	-	-	-	-	-	-	-	-	-	11
	2000	1 241	36	27	22	47	4	4	2	41	53	12	9	43	36	
	2011	1 547	44	33	28	37	2	8	4	45	43	19	15	42	25	
Guyana	1990	725	30	-	-	-	-	-	-	-	-	-	-	-	-	9
	2000	733	29	86	8	5	1	76	8	15	1	79	8	12	1	
	2011	756	28	88	8	4	0	82	9	8	1	84	9	6	1	
Haiti	1990	7 125	29	37	39	11	13	14	9	13	64	21	18	11	50	9
	2000	8 645	36	36	38	15	11	16	10	19	55	23	20	18	39	
	2011	10 124	53	34	36	22	8	17	12	30	41	26	24	27	23	
Honduras	1990	4 889	40	71	6	14	9	34	1	16	49	49	3	15	33	40
	2000	6 218	45	78	7	10	5	53	2	12	33	65	4	11	20	
	2011	7 755	52	86	8	5	1	74	2	9	15	81	5	7	7	

Country, area or territory	Year	USE OF DRINKING-WATER SOURCES (percentage of population)														Proportion of the 2011 population that gained access since 1995 [%]	
		URBAN					RURAL					NATIONAL					
		Improved			Unimproved		Improved			Unimproved		Improved			Unimproved		
		Total improved	Piped on premises	Other improved	Unimproved	Surface water	Total improved	Piped on premises	Other improved	Unimproved	Surface water	Total improved	Piped on premises	Other improved	Unimproved		Surface water
Ethiopia	1990	80	9	71	10	10	4	0	4	40	56	14	1	13	36	50	36
	2000	87	26	61	7	6	19	0	19	40	41	29	4	25	35	36	
	2011	97	49	48	3	0	39	1	38	41	20	49	9	40	34	17	
Fiji	1990	94	92	2	6	0	79	32	47	17	4	85	57	28	13	2	17
	2000	97	94	3	3	0	86	36	50	9	5	91	64	27	6	3	
	2011	100	96	4	0	0	92	40	52	2	6	96	69	27	1	3	
Finland	1990	100	96	4	0	0	100	85	15	0	0	100	94	6	0	0	5
	2000	100	99	1	0	0	100	92	8	0	0	100	98	2	0	0	
	2011	100	100	0	0	0	100	96	4	0	0	100	99	1	0	0	
France	1990	100	100	0	0	0	100	95	5	0	0	100	99	1	0	0	8
	2000	100	100	0	0	0	100	99	1	0	0	100	100	0	0	0	
	2011	100	100	0	0	0	100	100	0	0	0	100	100	0	0	0	
French Guiana	1990	-	-	-	-	-	-	-	-	-	-	-	-	-	-	-	41
	2000	89	-	-	11	-	72	-	-	28	-	85	-	-	15	-	
	2011	95	89	6	5	-	75	49	26	25	-	90	79	11	10	-	
French Polynesia	1990	-	-	-	-	-	-	-	-	-	-	100	98	2	0	0	21
	2000	-	-	-	-	-	-	-	-	-	-	100	98	2	0	0	
	2011	-	-	-	-	-	-	-	-	-	-	100	97	3	0	0	
Gabon	1990	-	-	-	-	-	-	-	-	-	-	-	-	-	-	-	29
	2000	95	52	43	3	2	47	8	39	18	35	85	43	42	6	9	
	2011	95	49	46	1	4	41	10	31	13	46	88	44	44	3	9	
Gambia	1990	86	25	61	14	0	67	0	67	33	0	74	10	64	26	0	39
	2000	90	40	50	10	0	77	3	74	23	0	83	21	62	17	0	
	2011	92	51	41	8	0	85	5	80	15	0	89	32	57	11	0	
Georgia	1990	95	80	15	5	0	72	21	51	28	0	85	53	32	15	0	NA*
	2000	97	86	11	3	0	81	34	47	19	0	89	61	28	11	0	
	2011	100	96	4	0	0	96	58	38	4	0	98	78	20	2	0	
Germany	1990	100	100	0	0	0	100	97	3	0	0	100	99	1	0	0	0
	2000	100	100	0	0	0	100	99	1	0	0	100	100	0	0	0	
	2011	100	100	0	0	0	100	100	0	0	0	100	100	0	0	0	
Ghana	1990	83	41	42	8	9	36	2	34	11	53	53	17	36	10	37	44
	2000	88	37	51	8	4	58	3	55	10	32	71	18	53	9	20	
	2011	92	32	60	8	0	80	3	77	9	11	86	18	68	9	5	
Greece	1990	99	99	0	1	0	92	82	10	8	-	96	92	4	4	-	8
	2000	100	100	0	0	0	98	95	3	2	-	99	98	1	1	-	
	2011	100	100	0	0	0	99	99	0	1	-	100	99	1	0	0	
Greenland	1990	100	100	0	0	0	100	100	0	0	0	100	100	0	0	0	3
	2000	100	100	0	0	0	100	100	0	0	0	100	100	0	0	0	
	2011	100	100	0	0	0	100	100	0	0	0	100	100	0	0	0	
Grenada	1990	-	-	-	-	-	-	-	-	-	-	-	-	-	-	-	-
	2000	-	-	-	-	-	-	-	-	-	-	94	75	19	6	-	
	2011	-	-	-	-	-	-	-	-	-	-	-	-	-	-	-	
Guadeloupe	1990	98	98	0	2	-	100	100	0	0	0	98	98	0	2	-	14
	2000	98	98	0	2	-	100	100	0	0	0	98	98	0	2	-	
	2011	99	99	0	1	-	100	100	0	0	0	99	99	0	1	-	
Guam	1990	-	-	-	-	-	-	-	-	-	-	100	99	1	0	0	20
	2000	-	-	-	-	-	-	-	-	-	-	99	98	1	1	0	
	2011	-	-	-	-	-	-	-	-	-	-	99	98	1	1	0	
Guatemala	1990	91	68	23	7	2	74	35	39	8	18	81	49	32	7	12	36
	2000	95	83	12	4	1	81	53	28	7	12	87	66	21	6	7	
	2011	99	98	1	1	0	89	73	16	5	6	94	85	9	3	3	
Guinea	1990	87	21	66	5	8	37	0	37	9	54	51	6	45	8	41	31
	2000	88	25	63	9	3	52	0	52	15	33	63	8	55	13	24	
	2011	90	29	61	10	0	65	1	64	21	14	74	11	63	17	9	
Guinea-Bissau	1990	45	14	31	55	0	32	0	32	63	5	36	4	32	60	4	40
	2000	68	13	55	32	0	43	0	43	53	4	52	5	47	45	3	
	2011	94	11	83	5	1	54	0	54	43	3	72	5	67	26	2	
Guyana	1990	-	-	-	-	-	-	-	-	-	-	-	-	-	-	-	10
	2000	94	74	20	5	1	87	56	31	7	6	89	61	28	7	4	
	2011	98	80	18	2	0	93	59	34	2	5	95	65	30	1	4	
Haiti	1990	88	26	62	7	5	51	2	49	26	23	61	9	52	21	18	16
	2000	84	22	62	12	4	50	3	47	33	17	62	10	52	26	12	
	2011	77	15	62	22	1	48	5	43	42	10	64	10	54	31	5	
Honduras	1990	92	84	8	7	1	60	43	17	4	36	73	60	13	5	22	34
	2000	94	90	4	5	1	70	60	10	8	22	81	73	8	7	12	
	2011	96	96	0	4	0	81	77	4	12	7	89	87	2	8	3	

Country, area or territory	Year	Population (x 1000)	Percentage urban population	USE OF SANITATION FACILITIES (percentage of population)												Proportion of the 2011 population that gained access since 1995 (%)
				URBAN				RURAL				NATIONAL				
				Improved	Unimproved			Improved	Unimproved			Improved	Unimproved			
					Shared	Unimproved	Open defecation		Shared	Unimproved	Open defecation		Shared	Unimproved	Open defecation	
Hungary	1990	10 376	66	100	0	0	0	100	0	0	0	100	0	0	0	NA*
	2000	10 211	65	100	0	0	0	100	0	0	0	100	0	0	0	
	2011	9 966	69	100	0	0	0	100	0	0	0	100	0	0	0	
Iceland	1990	255	91	100	0	0	0	100	0	0	0	100	0	0	0	18
	2000	281	92	100	0	0	0	100	0	0	0	100	0	0	0	
	2011	324	94	100	0	0	0	100	0	0	0	100	0	0	0	
India	1990	873 785	26	50	17	5	28	7	1	2	90	18	5	3	74	19
	2000	1 053 898	28	54	18	6	22	14	3	4	79	25	7	5	63	
	2011	1 241 492	31	60	20	7	13	24	4	6	66	35	9	6	50	
Indonesia	1990	184 346	31	61	8	12	19	24	6	22	48	35	7	19	39	25
	2000	213 395	42	67	9	8	16	33	8	17	42	47	8	14	31	
	2011	242 326	51	73	10	3	14	44	11	10	35	59	10	7	24	
Iran (Islamic Republic of)	1990	54 871	56	84	-	16	0	76	-	23	1	81	-	18	1	33
	2000	65 342	64	91	-	9	0	85	-	14	1	89	-	10	1	
	2011	74 799	69	100	-	0	0	99	-	0	1	100	-	0	0	
Iraq	1990	17 374	70	-	-	-	-	-	-	-	-	-	-	-	-	39
	2000	23 857	68	84	11	5	0	58	6	20	16	75	9	11	5	
	2011	32 665	66	86	11	3	0	80	8	10	2	84	10	5	1	
Ireland	1990	3 531	57	100	0	0	0	98	-	2	-	99	-	1	-	20
	2000	3 804	59	100	0	0	0	98	-	2	-	99	-	1	-	
	2011	4 526	62	100	0	0	0	98	-	2	-	99	-	1	-	
Israel	1990	4 500	90	100	0	0	0	100	0	0	0	100	0	0	0	29
	2000	6 015	91	100	0	0	0	100	0	0	0	100	0	0	0	
	2011	7 562	92	100	0	0	0	100	0	0	0	100	0	0	0	
Italy	1990	56 832	67	-	-	-	-	-	-	-	-	-	-	-	-	-
	2000	56 986	67	-	-	-	-	-	-	-	-	-	-	-	-	
	2011	60 789	68	-	-	-	-	-	-	-	-	-	-	-	-	
Jamaica	1990	2 365	49	78	20	1	1	81	14	4	1	79	17	3	1	9
	2000	2 582	52	78	20	1	1	82	14	3	1	80	17	2	1	
	2011	2 751	52	78	20	1	1	82	14	3	1	80	17	2	1	
Japan	1990	122 251	77	100	0	0	0	100	0	0	0	100	0	0	0	2
	2000	125 720	79	100	0	0	0	100	0	0	0	100	0	0	0	
	2011	126 497	91	100	0	0	0	100	0	0	0	100	0	0	0	
Jordan	1990	3 416	72	98	2	0	0	95	1	1	3	97	2	0	1	31
	2000	4 827	80	98	2	0	0	96	1	1	2	98	2	0	0	
	2011	6 330	83	98	2	0	0	98	1	1	0	98	2	0	0	
Kazakhstan	1990	16 530	56	96	3	1	0	97	1	0	2	96	2	1	1	2
	2000	14 957	56	97	3	0	0	97	1	1	1	97	2	1	0	
	2011	16 207	54	97	3	0	0	98	1	1	0	97	2	1	0	
Kenya	1990	23 447	17	26	40	31	3	24	16	38	22	25	20	36	19	12
	2000	31 254	20	29	44	24	3	26	17	38	19	27	22	35	16	
	2011	41 610	24	31	47	19	3	29	19	35	17	29	26	31	14	
Kiribati	1990	72	35	43	9	4	44	20	2	14	64	28	5	10	57	16
	2000	84	43	47	10	10	33	25	3	15	57	34	6	13	47	
	2011	101	44	51	11	17	21	30	3	18	49	39	6	18	37	
Kuwait	1990	2 088	98	100	-	0	0	100	-	0	0	100	-	0	0	42
	2000	1 941	98	100	-	0	0	100	-	0	0	100	-	0	0	
	2011	2 818	98	100	-	0	0	100	-	0	0	100	-	0	0	
Kyrgyzstan	1990	4 395	38	94	5	1	0	-	-	-	-	-	-	-	-	14
	2000	4 955	35	94	5	1	0	93	2	5	0	93	3	4	0	
	2011	5 393	35	94	5	1	0	93	2	5	0	93	3	4	0	
Lao People's Democratic Republic	1990	4 192	15	-	-	-	-	-	-	-	-	-	-	-	-	46
	2000	5 317	22	65	4	8	23	17	0	10	73	28	1	9	62	
	2011	6 288	34	87	5	2	6	48	1	6	45	62	2	4	32	
Latvia	1990	2 664	69	-	-	-	-	-	-	-	-	-	-	-	-	-
	2000	2 385	68	82	13	5	0	71	3	26	0	79	10	11	0	
	2011	2 243	68	-	-	-	-	-	-	-	-	-	-	-	-	
Lebanon	1990	2 948	83	100	-	0	0	-	-	-	-	-	-	-	-	-
	2000	3 742	86	100	-	0	0	87	-	13	-	98	-	2	-	
	2011	4 259	87	100	-	0	0	-	-	-	-	-	-	-	-	
Lesotho	1990	1 639	14	-	-	-	-	-	-	-	-	-	-	-	-	6
	2000	1 964	20	37	34	18	11	22	3	22	53	25	9	21	45	
	2011	2 194	28	32	29	34	5	24	4	23	49	26	11	26	37	
Liberia	1990	2 127	59	-	-	-	-	-	-	-	-	-	-	-	-	13
	2000	2 847	44	23	23	29	25	3	8	9	80	12	15	17	56	
	2011	4 129	48	30	30	15	25	7	23	8	62	18	26	12	44	

Country, area or territory	Year	USE OF DRINKING-WATER SOURCES (percentage of population)														Proportion of the 2011 population that gained access since 1995 (%)	
		URBAN					RURAL					NATIONAL					
		Improved			Unimproved		Improved			Unimproved		Improved			Unimproved		
		Total improved	Piped on premises	Other improved	Unimproved	Surface water	Total improved	Piped on premises	Other improved	Unimproved	Surface water	Total improved	Piped on premises	Other improved	Unimproved		Surface water
Hungary	1990	98	94	4	2	0	91	72	19	9	0	96	87	9	4	0	NA*
	2000	100	95	5	0	0	98	86	12	2	0	99	92	7	1	0	
	2011	100	95	5	0	0	100	-	-	0	0	100	-	-	0	0	
Iceland	1990	100	100	0	0	0	100	100	0	0	0	100	100	0	0	0	18
	2000	100	100	0	0	0	100	100	0	0	0	100	100	0	0	0	
	2011	100	100	0	0	0	100	100	0	0	0	100	100	0	0	0	
India	1990	89	48	41	10	1	64	7	57	32	4	70	17	53	27	3	33
	2000	92	49	43	8	0	76	10	66	21	3	81	21	60	17	2	
	2011	96	51	45	4	0	89	14	75	10	1	92	25	67	7	1	
Indonesia	1990	90	25	65	9	1	61	2	59	31	8	70	9	61	24	6	24
	2000	91	29	63	8	1	68	5	63	26	6	78	15	63	18	4	
	2011	93	33	61	7	0	76	8	68	20	4	84	21	64	14	2	
Iran (Islamic Republic of)	1990	98	96	2	2	0	81	67	14	15	4	91	83	8	7	2	22
	2000	98	96	2	2	0	84	74	10	14	2	93	88	5	6	1	
	2011	98	96	2	2	0	90	86	4	10	0	95	93	2	5	0	
Iraq	1990	95	95	0	3	2	39	29	10	15	46	78	75	3	7	15	36
	2000	95	93	2	3	2	49	37	12	16	35	80	75	5	8	12	
	2011	94	84	10	5	1	67	54	13	22	11	85	74	11	11	4	
Ireland	1990	100	100	0	0	0	100	99	1	0	0	100	100	0	0	0	20
	2000	100	100	0	0	0	100	99	1	0	0	100	100	0	0	0	
	2011	100	100	0	0	0	100	99	1	0	0	100	100	0	0	0	
Israel	1990	100	100	0	0	0	100	98	2	0	0	100	100	0	0	0	29
	2000	100	100	0	0	0	100	99	1	0	0	100	100	0	0	0	
	2011	100	100	0	0	0	100	100	0	0	0	100	100	0	0	0	
Italy	1990	100	100	0	0	0	100	96	4	0	0	100	99	1	0	0	6
	2000	100	100	0	0	0	100	100	0	0	0	100	100	0	0	0	
	2011	100	100	0	0	0	100	100	0	0	0	100	100	0	0	0	
Jamaica	1990	98	88	10	2	0	89	35	54	3	8	93	61	32	3	4	10
	2000	98	90	8	2	0	89	41	48	5	6	93	66	27	4	3	
	2011	97	91	6	3	0	89	47	42	6	5	93	70	23	5	2	
Japan	1990	100	97	3	0	0	100	86	14	0	0	100	94	6	0	0	2
	2000	100	98	2	0	0	100	91	9	0	0	100	97	3	0	0	
	2011	100	99	1	0	0	100	95	5	0	0	100	98	2	0	0	
Jordan	1990	99	98	1	1	0	91	86	5	8	1	97	95	2	3	0	29
	2000	98	96	2	2	0	91	83	8	8	1	97	93	4	3	0	
	2011	97	93	4	3	0	90	79	11	9	1	96	91	5	4	0	
Kazakhstan	1990	99	91	8	1	0	92	28	64	5	3	96	64	32	3	1	0
	2000	99	87	12	1	0	91	26	65	6	3	96	60	36	3	1	
	2011	99	82	17	1	0	90	24	66	7	3	95	55	40	3	2	
Kenya	1990	92	56	36	4	4	33	10	23	18	49	43	18	25	16	41	30
	2000	87	50	37	9	4	43	11	32	17	40	52	19	33	15	33	
	2011	83	45	38	12	5	54	12	42	16	30	61	20	41	15	24	
Kiribati	1990	74	43	31	26	-	36	16	20	64	-	50	26	24	50	-	25
	2000	80	54	26	20	-	43	13	30	57	-	59	31	28	41	-	
	2011	87	65	22	13	-	50	10	40	50	-	66	34	32	34	-	
Kuwait	1990	99	-	-	1	-	99	-	-	1	-	99	-	-	1	-	42
	2000	99	-	-	1	-	99	-	-	1	-	99	-	-	1	-	
	2011	99	-	-	1	-	99	-	-	1	-	99	-	-	1	-	
Kyrgyzstan	1990	97	75	22	1	2	-	25	-	-	-	-	44	-	-	-	23
	2000	97	82	15	2	1	73	31	42	4	23	81	49	32	3	16	
	2011	96	87	9	4	0	85	36	49	3	12	89	54	35	3	8	
Lao People's Democratic Republic	1990	-	-	-	-	-	-	3	-	-	-	-	-	-	-	-	39
	2000	72	37	35	23	5	38	4	34	29	33	45	11	34	28	27	
	2011	83	58	25	16	1	63	5	58	25	12	70	24	46	22	8	
Latvia	1990	100	-	-	0	0	96	-	-	4	0	98	-	-	2	0	NA*
	2000	100	93	7	0	0	96	59	37	4	0	98	82	16	2	0	
	2011	100	-	-	0	0	96	-	-	4	0	98	-	-	2	0	
Lebanon	1990	100	100	0	0	0	100	-	-	0	0	100	-	-	0	0	19
	2000	100	100	0	0	0	100	85	15	0	0	100	98	2	0	0	
	2011	100	100	0	0	0	100	-	-	0	0	100	-	-	0	0	
Lesotho	1990	95	25	70	5	0	78	2	76	20	2	80	6	74	19	1	12
	2000	94	39	55	6	0	76	3	73	23	1	79	10	69	20	1	
	2011	91	65	26	9	0	73	4	69	26	1	78	21	57	21	1	
Liberia	1990	-	3	-	-	-	-	1	-	-	-	-	2	-	-	-	45
	2000	74	4	70	25	1	50	1	49	27	23	61	2	59	25	14	
	2011	89	8	81	10	1	60	1	59	17	23	74	5	69	13	13	

Country, area or territory	Year	Population (x 1000)	Percentage urban population	USE OF SANITATION FACILITIES (percentage of population)												Proportion of the 2011 population that gained access since 1995 [%]
				URBAN				RURAL				NATIONAL				
				Unimproved				Unimproved				Unimproved				
				Improved	Shared	Unimproved	Open defecation	Improved	Shared	Unimproved	Open defecation	Improved	Shared	Unimproved	Open defecation	
Libya	1990	4 334	76	97	-	3	-	96	-	4	-	97	-	3	-	25
	2000	5 231	76	97	-	3	-	96	-	4	-	97	-	3	-	
	2011	6 423	78	97	-	3	-	96	-	4	-	97	-	3	-	
Lithuania	1990	3 696	68	95	-	5	-	-	-	-	-	-	-	-	-	-
	2000	3 500	67	95	-	5	-	69	-	31	-	87	-	13	-	
	2011	3 307	67	95	-	5	-	-	-	-	-	-	-	-	-	
Luxembourg	1990	381	81	100	0	0	0	100	0	0	0	100	0	0	0	21
	2000	435	84	100	0	0	0	100	0	0	0	100	0	0	0	
	2011	516	85	100	0	0	0	100	0	0	0	100	0	0	0	
Madagascar	1990	11 281	24	14	22	41	23	6	8	23	63	8	12	26	54	8
	2000	15 364	27	17	26	36	21	8	12	24	56	11	16	26	47	
	2011	21 315	33	19	30	32	19	11	16	24	49	14	20	27	39	
Malawi	1990	9 381	12	48	43	5	4	37	22	7	34	39	24	6	31	26
	2000	11 229	15	49	44	4	3	45	26	8	21	46	29	6	19	
	2011	15 381	16	50	45	3	2	53	31	9	7	53	33	8	6	
Malaysia	1990	18 209	50	88	4	7	1	81	3	7	9	84	4	7	5	32
	2000	23 415	62	94	4	1	1	90	4	2	4	92	4	2	2	
	2011	28 859	73	96	4	0	0	95	4	0	1	96	4	0	0	
Maldives	1990	219	26	98	2	0	0	58	1	10	31	68	1	8	23	44
	2000	273	28	98	2	0	0	72	1	8	19	79	2	5	14	
	2011	320	41	97	2	1	0	98	2	0	0	98	2	0	0	
Mali	1990	8 673	23	33	36	26	5	10	6	47	37	15	13	43	29	11
	2000	11 295	28	34	37	25	4	12	7	53	28	18	16	45	21	
	2011	15 840	35	35	38	23	4	14	9	58	19	22	19	45	14	
Malta	1990	368	90	100	0	0	0	100	0	0	0	100	0	0	0	7
	2000	397	92	100	0	0	0	100	0	0	0	100	0	0	0	
	2011	418	95	100	0	0	0	100	0	0	0	100	0	0	0	
Marshall Islands	1990	47	65	77	11	10	2	41	9	29	21	65	10	17	8	13
	2000	52	68	80	12	6	2	48	11	20	21	70	11	11	8	
	2011	55	72	84	12	2	2	55	12	12	21	76	12	5	7	
Martinique	1990	359	86	-	-	-	-	-	-	-	-	-	-	-	-	-
	2000	385	90	94	-	6	-	-	-	-	-	-	-	-	-	
	2011	407	89	94	-	6	-	73	-	27	-	92	-	8	-	
Mauritania	1990	1 996	40	29	10	38	23	8	3	20	69	16	6	27	51	15
	2000	2 643	40	38	14	28	20	9	4	15	72	21	8	20	51	
	2011	3 542	41	51	18	16	15	9	4	11	76	27	10	12	51	
Mauritius	1990	1 060	44	91	8	1	0	87	9	4	0	89	8	3	0	13
	2000	1 196	43	91	8	1	0	88	9	3	0	89	8	3	0	
	2011	1 307	42	92	8	0	0	90	9	1	0	91	9	0	0	
Mexico	1990	84 307	71	78	10	2	10	35	5	9	51	66	8	4	22	28
	2000	99 960	75	82	10	3	5	55	7	9	29	75	10	4	11	
	2011	114 793	78	87	11	2	0	77	10	8	5	85	11	3	1	
Micronesia (Federated States of)	1990	96	26	49	-	46	5	9	-	80	11	19	-	72	9	31
	2000	107	22	64	-	31	5	25	-	64	11	34	-	56	10	
	2011	112	23	83	-	12	5	47	-	42	11	55	-	35	10	
Monaco	1990	31	100	100	0	0	0	NA	NA	NA	NA	100	0	0	0	7
	2000	35	100	100	0	0	0	NA	NA	NA	NA	100	0	0	0	
	2011	35	100	100	0	0	0	NA	NA	NA	NA	100	0	0	0	
Mongolia	1990	2 193	57	66	32	2	0	-	-	-	-	-	-	-	-	12
	2000	2 411	57	65	32	3	0	28	21	15	36	49	27	8	16	
	2011	2 800	69	64	31	2	3	29	22	23	26	53	28	9	10	
Montenegro	1990	609	48	-	-	-	-	-	-	-	-	-	-	-	-	-
	2000	633	59	92	3	5	0	87	3	10	0	90	3	7	0	
	2011	632	63	92	3	5	0	87	3	10	0	90	3	7	0	
Montserrat	1990	11	13	-	-	-	-	-	-	-	-	70	8	10	12	-
	2000	5	11	-	-	-	-	-	-	-	-	80	9	7	4	
	2011	6	14	-	-	-	-	-	-	-	-	-	-	-	-	
Morocco	1990	24 781	48	81	14	0	5	27	3	2	68	53	8	1	38	21
	2000	28 793	53	82	14	2	2	43	5	2	50	64	10	2	24	
	2011	32 273	57	83	14	3	0	52	6	4	38	70	11	2	17	
Mozambique	1990	13 547	21	35	7	27	31	2	0	23	75	9	2	23	66	12
	2000	18 201	29	37	7	31	25	5	1	26	68	14	3	28	55	
	2011	23 930	31	41	8	38	13	9	2	34	55	19	4	35	42	
Myanmar	1990	39 268	25	-	-	-	-	-	-	-	-	-	-	-	-	30
	2000	44 958	27	79	12	7	2	56	10	18	16	62	11	15	12	
	2011	48 337	33	84	12	3	1	74	14	4	8	77	13	4	6	

Country, area or territory	Year	USE OF DRINKING-WATER SOURCES (percentage of population)														Proportion of the 2011 population that gained access since 1995 [%]	
		URBAN					RURAL					NATIONAL					
		Improved			Unimproved		Improved			Unimproved		Improved			Unimproved		
		Total improved	Piped on premises	Other improved	Unimproved	Surface water	Total improved	Piped on premises	Other improved	Unimproved	Surface water	Total improved	Piped on premises	Other improved	Unimproved		Surface water
Libya	1990	54	-	-	46	-	55	-	-	45	-	54	-	-	46	-	-
	2000	54	-	-	46	-	55	-	-	45	-	54	-	-	46	-	-
	2011	-	-	-	-	-	-	-	-	-	-	-	-	-	-	-	-
Lithuania	1990	98	89	9	2	-	-	46	-	-	-	75	-	-	-	-	-
	2000	98	93	5	2	-	81	60	21	19	-	92	82	10	8	-	-
	2011	98	98	0	2	-	-	73	-	-	-	90	-	-	-	-	-
Luxembourg	1990	100	100	0	0	0	100	98	2	0	0	100	100	0	0	0	0
	2000	100	100	0	0	0	100	98	2	0	0	100	100	0	0	0	0
	2011	100	100	0	0	0	100	98	2	0	0	100	100	0	0	0	0
Madagascar	1990	73	23	50	15	12	15	1	14	35	50	29	7	22	30	41	-
	2000	75	19	56	13	12	24	2	22	31	45	38	7	31	26	36	-
	2011	78	15	63	11	11	34	2	32	27	39	48	7	41	22	30	-
Malawi	1990	91	40	51	5	4	35	2	33	46	19	42	6	36	41	17	-
	2000	93	35	58	5	2	57	2	55	31	12	63	7	56	27	10	-
	2011	95	30	65	5	0	82	2	80	14	4	84	7	77	13	3	-
Malaysia	1990	94	86	8	6	0	82	59	23	16	2	88	73	15	11	1	-
	2000	99	95	4	1	0	93	80	13	5	2	96	89	7	3	1	-
	2011	100	99	1	0	0	99	-	-	0	1	100	-	-	0	0	-
Maldives	1990	100	50	50	0	0	91	0	91	9	-	93	13	80	7	-	-
	2000	100	67	33	0	0	93	0	93	7	-	95	19	76	5	-	-
	2011	100	99	1	0	0	98	1	97	2	-	99	41	58	1	-	-
Mali	1990	53	17	36	45	2	20	0	20	70	10	28	4	24	63	9	-
	2000	70	26	44	29	1	36	1	35	57	7	45	8	37	50	5	-
	2011	89	35	54	11	0	53	1	52	44	3	65	13	52	33	2	-
Malta	1990	100	100	0	0	0	98	98	0	2	0	100	100	0	0	0	0
	2000	100	100	0	0	0	100	100	0	0	0	100	100	0	0	0	0
	2011	100	100	0	0	0	100	100	0	0	0	100	100	0	0	0	0
Marshall Islands	1990	91	4	87	9	-	94	0	94	6	-	92	3	89	8	-	-
	2000	92	4	88	8	-	96	0	96	4	-	93	3	90	7	-	-
	2011	93	4	89	7	-	97	0	97	3	-	94	3	91	6	-	-
Martinique	1990	-	-	-	-	-	100	-	-	0	0	-	-	-	-	-	-
	2000	86	86	0	14	0	100	-	-	0	0	88	-	-	12	0	-
	2011	100	100	0	0	0	100	-	-	0	0	100	-	-	0	0	-
Mauritania	1990	36	15	21	63	1	26	0	26	65	9	30	6	24	64	6	-
	2000	45	26	19	54	1	37	8	29	56	7	40	15	25	55	5	-
	2011	52	35	17	48	0	48	14	34	46	6	50	23	27	47	3	-
Mauritius	1990	100	99	1	0	0	99	98	1	1	0	99	99	0	1	0	-
	2000	100	100	0	0	0	99	98	1	1	0	99	99	0	1	0	-
	2011	100	100	0	0	0	100	100	0	0	0	100	100	0	0	0	-
Mexico	1990	92	86	6	4	4	59	49	10	6	35	82	75	7	5	13	-
	2000	94	90	4	4	2	73	62	11	9	18	89	83	6	5	6	-
	2011	96	94	2	4	0	89	75	14	11	0	94	90	4	6	0	-
Micronesia (Federated States of)	1990	94	-	-	3	3	90	-	-	2	8	91	-	-	2	7	-
	2000	94	-	-	3	3	89	-	-	3	8	90	-	-	3	7	-
	2011	95	42	53	2	3	88	36	52	4	8	89	37	52	4	7	-
Monaco	1990	100	100	0	0	0	NA	NA	NA	NA	NA	100	100	0	0	0	-
	2000	100	100	0	0	0	NA	NA	NA	NA	NA	100	100	0	0	0	-
	2011	100	100	0	0	0	NA	NA	NA	NA	NA	100	100	0	0	0	-
Mongolia	1990	74	53	21	20	6	27	0	27	18	55	54	30	24	19	27	-
	2000	86	42	44	11	3	37	1	36	20	43	65	25	40	15	20	-
	2011	100	26	74	0	0	53	2	51	23	24	85	19	66	8	7	-
Montenegro	1990	100	98	2	0	0	95	-	-	5	0	97	-	-	3	0	-
	2000	100	98	2	0	0	95	77	18	5	0	98	90	8	2	0	-
	2011	100	98	2	0	0	95	77	18	5	0	98	91	7	2	0	-
Montserrat	1990	-	-	-	-	-	-	-	-	-	-	97	91	6	3	-	-
	2000	-	-	-	-	-	-	-	-	-	-	99	95	4	1	-	-
	2011	-	-	-	-	-	-	-	-	-	-	99	96	3	1	-	-
Morocco	1990	93	74	19	7	0	54	4	50	41	5	73	38	35	24	3	-
	2000	96	82	14	4	0	58	12	46	27	15	78	49	29	15	7	-
	2011	98	89	9	2	0	61	19	42	16	23	82	59	23	8	10	-
Mozambique	1990	73	22	51	24	3	24	1	23	43	33	34	5	29	39	27	-
	2000	75	21	54	21	4	27	1	26	47	26	41	7	34	39	20	-
	2011	78	19	59	18	4	33	1	32	53	14	47	6	41	42	11	-
Myanmar	1990	80	17	63	8	12	48	1	47	20	32	56	5	51	17	27	-
	2000	85	18	67	6	9	60	2	58	16	24	67	6	61	13	20	-
	2011	94	18	76	5	1	79	3	76	14	7	84	8	76	11	5	-

Country, area or territory	Year	Population (x 1000)	Percentage urban population	USE OF SANITATION FACILITIES (percentage of population)												Proportion of the 2011 population that gained access since 1995 (%)
				URBAN				RURAL				NATIONAL				
				Improved	Unimproved			Improved	Unimproved			Improved	Unimproved			
					Shared	Unimproved	Open defecation		Shared	Unimproved	Open defecation		Shared	Unimproved	Open defecation	
Namibia	1990	1 415	28	62	22	5	11	9	2	6	83	24	7	6	63	14
	2000	1 896	32	60	21	4	15	13	3	7	77	28	9	6	57	
	2011	2 324	38	57	20	4	19	17	4	7	72	32	10	6	52	
Nauru	1990	9	100	66	31	2	1	NA	NA	NA	NA	66	31	2	1	2
	2000	10	100	66	31	2	1	NA	NA	NA	NA	66	31	2	1	
	2011	10	100	66	31	1	2	NA	NA	NA	NA	66	31	1	2	
Nepal	1990	19 081	9	36	27	6	31	4	1	6	89	7	4	5	84	26
	2000	24 401	13	43	31	5	21	17	7	6	70	21	10	5	64	
	2011	30 486	17	50	37	2	11	32	12	6	50	35	16	6	43	
Netherlands	1990	14 892	69	100	0	0	0	100	0	0	0	100	0	0	0	7
	2000	15 863	77	100	0	0	0	100	0	0	0	100	0	0	0	
	2011	16 665	83	100	0	0	0	100	0	0	0	100	0	0	0	
New Caledonia	1990	170	60	-	-	-	-	-	-	-	-	100	-	0	0	25
	2000	212	62	-	-	-	-	-	-	-	-	100	-	0	0	
	2011	255	62	-	-	-	-	-	-	-	-	100	-	0	0	
New Zealand	1990	3 398	85	-	-	-	-	88	-	12	-	-	-	-	-	-
	2000	3 858	86	-	-	-	-	-	-	-	-	-	-	-	-	
	2011	4 415	86	-	-	-	-	-	-	-	-	-	-	-	-	
Nicaragua	1990	4 121	52	59	8	29	4	26	4	25	45	43	6	27	24	16
	2000	5 074	55	61	8	27	4	32	5	32	31	48	7	29	16	
	2011	5 870	58	63	9	24	4	37	6	37	20	52	7	31	10	
Niger	1990	7 788	15	19	14	41	26	2	1	2	95	4	3	9	84	6
	2000	10 922	16	27	20	31	22	3	1	3	93	7	4	8	81	
	2011	16 069	18	34	25	21	20	4	2	3	91	10	6	6	78	
Nigeria	1990	97 552	35	40	44	10	6	37	17	12	34	38	26	12	24	6
	2000	123 689	42	37	40	13	10	33	15	19	33	34	25	18	23	
	2011	162 471	50	33	36	16	15	28	13	28	31	31	24	22	23	
Niue	1990	2	31	-	-	-	-	-	-	-	-	-	-	-	-	NA*
	2000	2	33	-	-	-	-	-	-	-	-	79	-	21	-	
	2011	1	38	-	-	-	-	-	-	-	-	100	-	0	0	
Northern Mariana Islands	1990	44	90	-	-	-	-	-	-	-	-	84	-	16	0	15
	2000	68	90	-	-	-	-	-	-	-	-	92	-	8	0	
	2011	61	91	-	-	-	-	-	-	-	-	98	-	2	0	
Norway	1990	4 241	72	100	0	0	0	100	0	0	0	100	0	0	0	11
	2000	4 491	76	100	0	0	0	100	0	0	0	100	0	0	0	
	2011	4 925	79	100	0	0	0	100	0	0	0	100	0	0	0	
Oman	1990	1 868	66	95	-	1	4	55	-	8	37	82	-	3	15	30
	2000	2 264	72	96	-	1	3	71	-	4	25	89	-	2	9	
	2011	2 846	73	97	-	0	3	95	-	0	5	97	-	0	3	
Pakistan	1990	111 845	31	72	6	14	8	7	1	20	72	27	3	18	52	24
	2000	144 522	33	72	6	16	6	20	4	23	53	37	4	22	37	
	2011	176 745	36	72	6	18	4	34	6	26	34	47	6	24	23	
Palau	1990	15	70	63	-	37	0	8	-	92	0	46	-	54	0	46
	2000	19	70	89	-	11	0	63	-	37	0	81	-	19	0	
	2011	21	84	100	-	0	0	100	-	0	0	100	-	0	0	
Panama	1990	2 416	54	73	11	15	1	40	4	32	24	58	8	22	12	25
	2000	2 956	66	75	11	12	2	47	4	32	17	65	9	19	7	
	2011	3 571	75	77	12	9	2	54	5	31	10	71	10	15	4	
Papua New Guinea	1990	4 158	15	62	10	25	3	13	3	66	18	20	4	60	16	5
	2000	5 379	13	60	9	27	4	13	3	68	16	19	3	64	14	
	2011	7 014	12	57	9	30	4	13	3	71	13	19	3	66	12	
Paraguay	1990	4 244	49	61	3	35	1	15	0	81	4	38	2	58	2	-
	2000	5 344	55	79	4	16	1	31	0	67	2	58	2	39	1	
	2011	6 568	62	-	-	-	-	-	-	-	-	-	-	-	-	
Peru	1990	21 686	69	71	8	5	16	17	2	7	74	54	6	6	34	24
	2000	25 862	73	76	8	8	8	27	2	20	51	63	7	10	20	
	2011	29 400	77	81	9	10	0	38	4	32	26	72	8	14	6	
Philippines	1990	61 629	49	69	15	8	8	45	10	22	23	57	12	15	16	30
	2000	77 310	48	74	16	4	6	57	13	12	18	65	14	9	12	
	2011	94 852	49	79	17	1	3	69	16	3	12	74	16	2	8	
Poland	1990	38 056	61	96	-	4	-	-	-	-	-	-	-	-	-	-
	2000	38 302	62	96	-	4	-	80	-	20	-	89	-	11	-	
	2011	38 299	61	96	-	4	-	-	-	-	-	-	-	-	-	
Portugal	1990	9 925	48	98	-	2	0	90	-	10	0	94	-	6	0	9
	2000	10 336	54	99	-	1	0	96	-	4	0	98	-	2	0	
	2011	10 690	61	100	0	0	0	100	0	0	0	100	0	0	0	

Country, area or territory	Year	USE OF DRINKING-WATER SOURCES (percentage of population)														Proportion of the 2011 population that gained access since 1995 [%]	
		URBAN					RURAL					NATIONAL					
		Improved			Unimproved		Improved			Unimproved		Improved			Unimproved		
		Total improved	Piped on premises	Other improved	Unimproved	Surface water	Total improved	Piped on premises	Other improved	Unimproved	Surface water	Total improved	Piped on premises	Other improved	Unimproved		Surface water
Namibia	1990	99	82	17	1	0	51	14	37	35	14	64	33	31	26	10	42
	2000	99	77	22	1	0	72	21	51	15	13	80	39	41	11	9	
	2011	99	72	27	1	0	90	28	62	0	10	93	45	48	1	6	
Nauru	1990	-	-	-	-	-	NA	NA	NA	NA	NA	-	-	-	-	-	-
	2000	93	-	-	7	-	NA	NA	NA	NA	NA	93	-	-	7	-	
	2011	96	68	28	4	-	NA	NA	NA	NA	NA	96	68	28	4	-	
Nepal	1990	96	44	52	3	1	64	2	62	29	7	67	6	61	26	7	36
	2000	94	46	48	4	2	75	8	67	19	6	77	13	64	18	5	
	2011	91	49	42	6	3	87	14	73	9	4	88	19	69	8	4	
Netherlands	1990	100	100	0	0	0	100	100	0	0	0	100	100	0	0	0	7
	2000	100	100	0	0	0	100	100	0	0	0	100	100	0	0	0	
	2011	100	100	0	0	0	100	100	0	0	0	100	100	0	0	0	
New Caledonia	1990	-	-	-	-	-	-	-	-	-	-	-	-	-	-	-	-
	2000	-	-	-	-	-	-	-	-	-	-	94	85	9	6	-	
	2011	-	-	-	-	-	-	-	-	-	-	98	94	4	2	-	
New Zealand	1990	100	100	0	0	0	100	100	0	0	0	100	100	0	0	0	17
	2000	100	100	0	0	0	100	100	0	0	0	100	100	0	0	0	
	2011	100	100	0	0	0	100	100	0	0	0	100	100	0	0	0	
Nicaragua	1990	92	82	10	7	1	54	17	37	30	16	74	51	23	18	8	24
	2000	95	86	9	4	1	62	24	38	27	11	80	58	22	15	5	
	2011	98	89	9	2	0	68	29	39	25	7	85	63	22	12	3	
Niger	1990	57	21	36	42	1	31	0	31	66	3	35	3	32	62	3	28
	2000	78	30	48	22	0	35	1	34	62	3	42	6	36	55	3	
	2011	100	39	61	0	0	39	2	37	58	3	50	8	42	48	2	
Nigeria	1990	81	33	48	16	3	29	4	25	31	40	47	14	33	26	27	26
	2000	78	20	58	18	4	38	2	36	31	31	55	10	45	25	20	
	2011	75	7	68	19	6	47	1	46	31	22	61	4	57	25	14	
Niue	1990	-	-	-	-	-	-	-	-	-	-	99	98	1	1	-	NA*
	2000	-	-	-	-	-	-	-	-	-	-	99	98	1	1	-	
	2011	-	-	-	-	-	-	-	-	-	-	99	98	1	1	-	
Northern Mariana Islands	1990	-	-	-	-	-	-	-	-	-	-	94	70	24	6	-	7
	2000	-	-	-	-	-	-	-	-	-	-	95	78	17	5	-	
	2011	-	-	-	-	-	-	-	-	-	-	97	87	10	3	-	
Norway	1990	100	100	0	0	0	100	100	0	0	0	100	100	0	0	0	11
	2000	100	100	0	0	0	100	100	0	0	0	100	100	0	0	0	
	2011	100	100	0	0	0	100	100	0	0	0	100	100	0	0	0	
Oman	1990	83	30	53	13	4	70	3	67	20	10	79	21	58	15	6	29
	2000	87	48	39	9	4	75	15	60	15	10	84	39	45	10	6	
	2011	95	81	14	1	4	85	37	48	15	-	92	70	22	8	-	
Pakistan	1990	95	56	39	4	1	81	8	73	8	11	85	23	62	7	8	29
	2000	96	57	39	4	0	85	15	70	7	8	88	29	59	7	5	
	2011	96	58	38	4	0	89	23	66	7	4	91	36	55	6	3	
Palau	1990	98	98	0	2	-	72	72	0	28	-	90	90	0	10	-	19
	2000	97	97	0	3	-	80	80	0	20	-	92	92	0	8	-	
	2011	97	97	0	3	-	86	86	0	14	-	95	95	0	5	-	
Panama	1990	98	96	2	2	0	67	60	7	21	12	84	80	4	11	5	29
	2000	98	96	2	2	0	76	72	4	13	11	90	88	2	6	4	
	2011	97	95	2	3	0	86	83	3	4	10	94	92	2	4	2	
Papua New Guinea	1990	87	61	26	7	6	24	4	20	27	49	33	12	21	24	43	18
	2000	88	59	29	7	5	27	3	24	24	49	35	11	24	22	43	
	2011	89	55	34	8	3	33	3	30	19	48	40	9	31	17	43	
Paraguay	1990	81	59	22	18	1	25	0	25	63	12	52	29	23	41	7	-
	2000	92	75	17	8	0	51	21	30	42	7	74	51	23	23	3	
	2011	99	-	-	1	0	-	-	-	-	-	-	-	-	-	-	
Peru	1990	88	74	14	11	1	45	13	32	28	27	75	55	20	16	9	22
	2000	90	78	12	9	1	55	29	26	23	22	80	65	15	14	6	
	2011	91	84	7	8	1	66	47	19	18	16	85	75	10	11	4	
Philippines	1990	93	40	53	6	1	77	9	68	21	2	85	24	61	14	1	29
	2000	93	50	43	7	0	85	17	68	14	1	89	33	56	10	1	
	2011	93	61	32	7	0	92	25	67	7	1	92	43	49	7	1	
Poland	1990	100	97	3	0	0	-	73	-	-	-	88	-	-	-	-	-
	2000	100	99	1	0	0	-	89	-	-	-	95	-	-	-	-	
	2011	100	99	1	0	0	-	96	-	-	-	98	-	-	-	-	
Portugal	1990	98	96	2	2	0	95	83	12	5	0	96	89	7	4	0	8
	2000	99	98	1	1	0	97	92	5	3	0	98	95	3	2	0	
	2011	100	100	0	0	0	100	100	0	0	0	100	100	0	0	0	

Country, area or territory	Year	Population (x 1000)	Percentage urban population	USE OF SANITATION FACILITIES (percentage of population)												Proportion of the 2011 population that gained access since 1995 (%)	
				URBAN				RURAL				NATIONAL					
				Unimproved				Unimproved				Unimproved					
				Improved	Shared	Unimproved	Open defecation	Improved	Shared	Unimproved	Open defecation	Improved	Shared	Unimproved	Open defecation		
Puerto Rico	1990	3 529	72	-	-	-	-	-	-	-	-	-	99	-	0	1	
	2000	3 814	95	-	-	-	-	-	-	-	-	-	99	-	0	1	1
	2011	3 746	99	-	-	-	-	-	-	-	-	-	99	-	1	1	
Qatar	1990	474	93	100	-	0	0	100	-	0	0	100	-	0	0	0	73
	2000	591	96	100	-	0	0	100	-	0	0	100	-	0	0	0	
	2011	1 870	99	100	-	0	0	100	-	0	0	100	-	0	0	0	
Republic of Korea	1990	42 980	74	100	-	0	0	100	-	0	0	100	-	0	0	0	8
	2000	45 988	80	100	-	0	0	100	-	0	0	100	-	0	0	0	
	2011	48 391	83	100	-	0	0	100	-	0	0	100	-	0	0	0	
Republic of Moldova	1990	4 364	47	-	-	-	-	-	-	-	-	-	-	-	-	-	NA*
	2000	4 107	45	87	7	6	0	72	4	24	0	79	6	15	0	0	
	2011	3 545	48	89	7	4	0	83	5	12	0	86	6	8	0	0	
Réunion	1990	612	81	98	-	2	-	95	-	5	-	98	-	2	-	-	21
	2000	739	90	98	-	2	-	95	-	5	-	98	-	2	-	-	
	2011	856	94	98	-	2	-	95	-	5	-	98	-	2	-	-	
Romania	1990	23 207	53	88	3	9	-	52	1	47	-	71	2	27	-	-	-
	2000	22 192	53	88	3	9	-	54	1	45	-	72	2	26	-	-	-
	2011	21 436	53	-	-	-	-	-	-	-	-	-	-	-	-	-	-
Russian Federation	1990	148 244	73	80	16	3	1	58	11	30	1	74	15	10	1	1	NA*
	2000	146 758	73	77	15	7	1	59	11	29	1	72	14	13	1	1	
	2011	142 836	74	74	15	10	1	59	11	29	1	70	14	15	1	1	
Rwanda	1990	7 110	5	64	23	10	3	30	3	59	8	32	4	56	8	8	41
	2000	8 098	14	63	22	13	2	45	5	45	5	47	7	41	5	5	
	2011	10 943	19	61	22	16	1	61	7	30	2	61	10	27	2	2	
Saint Kitts and Nevis	1990	41	35	-	-	-	-	-	-	-	-	-	-	-	-	-	-
	2000	46	33	-	-	-	-	-	-	-	-	87	-	10	3	-	-
	2011	53	32	-	-	-	-	-	-	-	-	-	-	-	-	-	-
Saint Lucia	1990	138	29	67	3	24	6	54	4	31	11	58	3	29	10	10	15
	2000	157	28	69	3	20	8	60	4	26	10	62	4	25	9	9	
	2011	176	18	70	3	18	9	64	4	24	8	65	4	23	8	8	
Saint Vincent and the Grenadines	1990	107	41	-	-	-	-	-	-	-	-	63	-	33	4	4	-
	2000	108	45	-	-	-	-	-	-	-	-	73	-	23	4	-	-
	2011	109	49	-	-	-	-	-	-	-	-	-	-	-	-	-	-
Samoa	1990	161	21	94	5	1	0	92	6	2	0	93	6	1	0	0	7
	2000	177	22	94	5	1	0	92	6	2	0	92	6	2	0	0	
	2011	184	20	93	5	2	0	91	6	3	0	92	6	2	0	0	
San Marino	1990	24	90	-	-	-	-	-	-	-	-	-	-	-	-	-	-
	2000	27	93	-	-	-	-	-	-	-	-	-	-	-	-	-	-
	2011	32	94	-	-	-	-	-	-	-	-	-	-	-	-	-	-
Sao Tome and Principe	1990	116	44	-	-	-	-	-	-	-	-	-	-	-	-	-	-
	2000	141	53	27	4	4	65	14	4	4	78	21	4	4	71	20	20
	2011	169	63	41	6	5	48	23	7	4	66	34	6	5	55	55	
Saudi Arabia	1990	16 139	77	-	-	-	-	-	-	-	-	92	-	3	5	5	38
	2000	20 045	80	-	-	-	-	-	-	-	-	97	-	0	3	3	
	2011	28 083	82	-	-	-	-	-	-	-	-	100	-	0	0	0	
Senegal	1990	7 242	39	59	20	12	9	21	6	17	56	36	11	15	38	38	25
	2000	9 506	40	63	21	11	5	29	8	20	43	43	13	16	28	28	
	2011	12 768	43	68	22	9	1	39	11	22	28	51	16	16	17	17	
Serbia	1990	9 569	50	97	2	1	0	95	2	3	0	96	2	2	0	0	NA*
	2000	10 134	53	97	2	1	0	95	2	3	0	96	2	2	0	0	
	2011	9 854	56	98	2	0	0	96	2	2	0	97	2	1	0	0	
Seychelles	1990	71	49	-	-	-	-	-	-	-	-	97	-	2	1	1	14
	2000	79	50	-	-	-	-	-	-	-	-	97	-	2	1	1	
	2011	87	54	-	-	-	-	-	-	-	-	97	-	2	1	1	
Sierra Leone	1990	3 982	33	23	43	34	0	5	14	55	26	11	24	47	18	18	5
	2000	4 143	36	23	42	31	4	6	16	46	32	12	26	40	22	22	
	2011	5 997	39	22	42	27	9	7	18	36	39	13	28	32	27	27	
Singapore	1990	3 017	100	99	-	1	0	NA	NA	NA	NA	99	-	1	0	0	33
	2000	3 919	100	100	-	0	0	NA	NA	NA	NA	100	-	0	0	0	
	2011	5 188	100	100	-	0	0	NA	NA	NA	NA	100	-	0	0	0	
Slovakia	1990	5 270	56	100	0	0	0	100	0	0	0	100	0	0	0	0	2
	2000	5 405	56	100	0	0	0	100	0	0	0	100	0	0	0	0	
	2011	5 472	55	100	0	0	0	100	0	0	0	100	0	0	0	0	
Slovenia	1990	1 927	50	100	0	0	0	100	0	0	0	100	0	0	0	0	3
	2000	1 985	51	100	0	0	0	100	0	0	0	100	0	0	0	0	
	2011	2 035	50	100	0	0	0	100	0	0	0	100	0	0	0	0	

Country, area or territory	Year	USE OF DRINKING-WATER SOURCES (percentage of population)														Proportion of the 2011 population that gained access since 1995 [%]	
		URBAN					RURAL					NATIONAL					
		Improved			Unimproved		Improved			Unimproved		Improved			Unimproved		
		Total improved	Piped on premises	Other improved	Unimproved	Surface water	Total improved	Piped on premises	Other improved	Unimproved	Surface water	Total improved	Piped on premises	Other improved	Unimproved		Surface water
Puerto Rico	1990	-	-	-	-	-	-	-	-	-	94	87	7	6	-	-	
	2000	-	-	-	-	-	-	-	-	-	94	87	7	6	-		
	2011	-	-	-	-	-	-	-	-	-	-	-	-	-	-		
Qatar	1990	100	-	-	0	0	100	-	-	0	0	100	-	-	0	0	73
	2000	100	-	-	0	0	100	-	-	0	0	100	-	-	0	0	
	2011	100	-	-	0	0	100	-	-	0	0	100	-	-	0	0	
Republic of Korea	1990	97	96	1	3	0	-	-	-	-	-	-	-	-	-	-	14
	2000	98	97	1	2	0	75	46	29	25	-	93	87	6	7	-	
	2011	100	99	1	0	0	88	64	24	12	-	98	93	5	2	-	
Republic of Moldova	1990	98	-	-	2	0	-	0	-	-	-	-	-	-	-	-	NA*
	2000	99	77	22	1	0	89	1	88	11	0	93	35	58	7	0	
	2011	99	86	13	1	0	93	23	70	7	0	96	53	43	4	0	
Réunion	1990	99	99	0	1	-	98	98	0	2	-	99	99	0	1	-	21
	2000	99	99	0	1	-	98	98	0	2	-	99	99	0	1	-	
	2011	99	99	0	1	-	98	98	0	2	-	99	99	0	1	-	
Romania	1990	93	88	5	7	-	55	13	42	45	-	75	53	22	25	-	-
	2000	97	90	7	3	-	70	21	49	30	-	84	57	27	16	-	
	2011	99	92	7	1	-	28	-	-	-	-	62	-	-	-	-	
Russian Federation	1990	98	88	10	2	0	80	37	43	19	1	93	74	19	7	0	NA*
	2000	98	90	8	2	0	86	46	40	12	2	95	78	17	5	0	
	2011	99	91	8	1	0	92	55	37	5	3	97	82	15	3	0	
Rwanda	1990	91	30	61	3	6	60	0	60	14	26	62	2	60	13	25	37
	2000	86	23	63	7	7	63	0	63	17	20	66	3	63	16	18	
	2011	80	15	65	13	7	66	1	65	20	14	69	4	65	19	12	
Saint Kitts and Nevis	1990	-	-	-	-	-	-	-	-	-	-	-	-	-	-	-	18
	2000	-	-	-	-	-	-	-	-	-	-	98	92	6	2	-	
	2011	-	-	-	-	-	-	-	-	-	-	98	-	2	-	-	
Saint Lucia	1990	96	81	15	4	-	92	65	27	8	-	93	70	23	7	-	16
	2000	97	85	12	3	-	93	72	21	7	-	94	76	18	6	-	
	2011	98	89	9	2	-	93	80	13	7	-	94	82	12	6	-	
Saint Vincent and the Grenadines	1990	-	-	-	-	-	-	-	-	-	-	88	52	36	12	-	5
	2000	-	-	-	-	-	-	-	-	-	-	93	74	19	7	-	
	2011	-	-	-	-	-	-	-	-	-	-	95	-	5	-	-	
Samoa	1990	97	82	15	3	0	87	72	15	13	0	89	74	15	11	0	15
	2000	97	87	10	3	0	92	78	14	8	0	93	80	13	7	0	
	2011	97	91	6	2	1	98	84	14	1	1	98	85	13	1	1	
San Marino	1990	-	-	-	-	-	-	-	-	-	-	-	-	-	-	-	-
	2000	-	-	-	-	-	-	-	-	-	-	-	-	-	-	-	
	2011	-	-	-	-	-	-	-	-	-	-	-	-	-	-	-	
Sao Tome and Principe	1990	-	-	-	-	-	-	-	-	-	-	-	-	-	-	-	41
	2000	86	30	56	4	10	70	14	56	7	23	78	23	55	6	16	
	2011	99	39	60	1	0	94	22	72	2	4	97	33	64	1	2	
Saudi Arabia	1990	-	-	-	-	-	-	-	-	-	-	92	58	34	8	-	36
	2000	-	-	-	-	-	-	-	-	-	-	95	63	32	5	-	
	2011	-	-	-	-	-	-	-	-	-	-	97	67	30	3	-	
Senegal	1990	88	46	42	12	0	42	1	41	56	2	60	18	42	39	1	32
	2000	90	60	30	10	0	50	9	41	48	2	66	30	36	33	1	
	2011	93	77	16	6	1	59	18	41	39	2	73	43	30	26	1	
Serbia	1990	100	97	3	0	0	99	-	-	1	0	99	-	-	1	0	NA*
	2000	100	97	3	0	0	99	72	27	1	0	100	85	15	0	0	
	2011	99	97	2	1	0	99	72	27	1	0	99	86	13	1	0	
Seychelles	1990	-	-	-	-	-	-	-	-	-	-	96	-	-	0	4	13
	2000	-	-	-	-	-	-	-	-	-	-	96	-	-	0	4	
	2011	-	-	-	-	-	-	-	-	-	-	96	92	4	0	4	
Sierra Leone	1990	66	17	49	29	5	23	2	21	28	49	37	7	30	29	34	30
	2000	75	14	61	18	7	31	1	30	23	46	47	6	41	21	32	
	2011	84	11	73	7	9	40	1	39	16	44	57	5	52	13	30	
Singapore	1990	100	100	0	0	0	NA	NA	NA	NA	NA	100	100	0	0	0	33
	2000	100	100	0	0	0	NA	NA	NA	NA	NA	100	100	0	0	0	
	2011	100	100	0	0	0	NA	NA	NA	NA	NA	100	100	0	0	0	
Slovakia	1990	100	100	0	0	0	100	89	11	0	0	100	95	5	0	0	2
	2000	100	96	4	0	0	100	92	8	0	0	100	94	6	0	0	
	2011	100	-	-	0	0	100	-	-	0	0	100	-	-	0	0	
Slovenia	1990	100	100	0	0	0	99	99	0	1	-	100	100	0	0	0	3
	2000	100	100	0	0	0	99	99	0	1	-	100	100	0	0	0	
	2011	100	100	0	0	0	99	99	0	1	-	100	100	0	0	0	

Country, area or territory	Year	Population (x 1000)	Percentage urban population	USE OF SANITATION FACILITIES (percentage of population)												Proportion of the 2011 population that gained access since 1995 [%]	
				URBAN				RURAL				NATIONAL					
				Unimproved				Unimproved				Unimproved					
				Improved	Shared	Unimproved	Open defecation	Improved	Shared	Unimproved	Open defecation	Improved	Shared	Unimproved	Open defecation		
Solomon Islands	1990	310	14	-	-	-	-	-	-	-	-	-	-	-	-	-	-
	2000	409	16	81	-	15	4	15	-	63	22	25	-	56	19	-	-
	2011	552	20	81	-	15	4	15	-	63	22	29	-	53	18	-	-
Somalia	1990	6 599	30	-	-	-	-	-	-	-	-	-	-	-	-	-	-
	2000	7 399	33	45	26	16	13	10	9	9	72	22	15	10	53	9	9
	2011	9 557	38	52	30	15	3	6	6	5	83	24	15	9	52	-	-
South Africa	1990	36 794	52	80	8	10	2	46	5	23	26	64	7	16	13	-	-
	2000	44 760	57	82	8	8	2	51	6	22	21	69	7	14	10	-	20
	2011	50 460	62	84	9	5	2	57	6	22	15	74	8	11	7	-	-
South Sudan	1990	-	-	-	-	-	-	-	-	-	-	-	-	-	-	-	-
	2000	-	-	-	-	-	-	-	-	-	-	-	-	-	-	-	-
	2011	10 314	18	16	6	20	58	7	2	10	81	9	3	11	77	-	-
Spain	1990	38 889	75	100	0	0	0	100	0	0	0	100	0	0	0	-	-
	2000	40 288	76	100	0	0	0	100	0	0	0	100	0	0	0	-	15
	2011	46 455	77	100	0	0	0	100	0	0	0	100	0	0	0	-	-
Sri Lanka	1990	17 337	17	78	13	5	4	65	4	16	15	68	6	12	14	-	-
	2000	18 745	16	80	14	3	3	78	5	9	8	79	6	8	7	-	28
	2011	21 045	15	83	14	2	1	93	6	0	1	91	7	1	1	-	-
Sudan	1990	26 494	25	52	12	28	8	18	5	29	48	27	7	28	38	-	-
	2000	34 188	29	48	11	27	14	16	5	26	53	25	7	26	42	-	0
	2011	34 318	33	44	10	26	20	13	4	24	59	24	6	24	46	-	-
Suriname	1990	407	60	90	9	1	0	-	-	-	-	-	-	-	-	-	-
	2000	467	65	90	9	1	0	65	11	2	22	81	10	1	8	-	17
	2011	529	70	90	9	1	0	66	11	3	20	83	10	1	6	-	-
Swaziland	1990	863	23	63	29	6	2	44	15	10	31	49	18	8	25	-	-
	2000	1 064	23	63	29	6	2	49	16	6	29	52	19	6	23	-	17
	2011	1 203	21	63	29	7	1	55	18	9	18	57	21	7	15	-	-
Sweden	1990	8 559	83	100	0	0	0	100	0	0	0	100	0	0	0	-	-
	2000	8 860	84	100	0	0	0	100	0	0	0	100	0	0	0	-	7
	2011	9 441	85	100	0	0	0	100	0	0	0	100	0	0	0	-	-
Switzerland	1990	6 674	73	100	0	0	0	100	0	0	0	100	0	0	0	-	-
	2000	7 168	73	100	0	0	0	100	0	0	0	100	0	0	0	-	9
	2011	7 702	74	100	0	0	0	100	0	0	0	100	0	0	0	-	-
Syrian Arab Republic	1990	12 324	49	95	4	1	0	75	4	4	17	85	4	2	9	-	-
	2000	15 989	52	95	4	1	0	81	5	4	10	89	4	2	5	-	37
	2011	20 766	56	96	4	0	0	94	5	1	0	95	4	1	0	-	-
Tajikistan	1990	5 303	32	93	4	2	1	-	-	-	-	-	-	-	-	-	-
	2000	6 173	26	93	4	2	1	89	3	6	2	90	3	6	1	-	21
	2011	6 977	27	95	4	1	0	94	3	3	0	95	3	2	0	-	-
Thailand	1990	57 072	29	87	11	1	1	79	3	1	17	82	6	0	12	-	-
	2000	63 155	31	88	11	1	0	93	4	0	3	91	6	1	2	-	19
	2011	69 519	34	89	11	0	0	96	4	0	0	93	7	0	0	-	-
The former Yugoslav Republic of Macedonia	1990	1 909	58	96	-	4	0	-	-	-	-	-	-	-	-	-	-
	2000	2 009	59	93	3	4	0	85	5	10	0	90	3	7	0	-	-
	2011	2 064	59	97	3	0	0	83	4	12	1	91	4	4	1	-	-
Timor-Leste	1990	743	21	-	-	-	-	-	-	-	-	-	-	-	-	-	-
	2000	830	24	53	13	10	24	32	7	6	55	37	8	7	48	-	11
	2011	1 154	28	68	16	8	8	27	6	30	37	39	9	23	29	-	-
Togo	1990	3 666	29	26	44	5	25	8	15	3	74	13	24	3	60	-	-
	2000	4 794	33	26	44	8	22	5	11	10	74	12	22	9	57	-	3
	2011	6 155	38	26	43	11	20	3	5	18	74	11	20	15	54	-	-
Tokelau	1990	2	0	NA	NA	NA	NA	41	-	59	-	41	-	59	-	-	-
	2000	2	0	NA	NA	NA	NA	63	-	37	-	63	-	37	-	-	33
	2011	1	0	NA	NA	NA	NA	93	-	7	-	93	-	7	-	-	-
Tonga	1990	95	23	98	-	2	-	95	-	5	-	95	-	5	-	-	-
	2000	98	23	99	-	1	-	92	-	8	-	94	-	6	-	-	5
	2011	105	23	99	-	1	-	89	-	11	-	92	-	8	-	-	-
Trinidad and Tobago	1990	1 215	9	93	7	0	0	93	7	0	0	93	7	0	0	-	-
	2000	1 292	11	92	7	1	0	92	7	1	0	92	7	1	0	-	5
	2011	1 346	14	92	7	1	0	92	7	1	0	92	7	1	0	-	-
Tunisia	1990	8 215	58	94	2	1	3	43	5	3	49	73	3	2	22	-	-
	2000	9 456	63	96	2	1	1	58	7	6	29	82	4	3	11	-	24
	2011	10 594	66	97	2	1	0	75	9	0	16	90	4	1	5	-	-
Turkey	1990	54 130	59	96	1	3	0	66	2	27	5	84	2	12	2	-	-
	2000	63 628	65	96	2	2	0	71	3	23	3	87	2	10	1	-	23
	2011	73 640	72	97	2	1	0	75	3	21	1	91	2	7	0	-	-

Country, area or territory	Year	USE OF DRINKING-WATER SOURCES (percentage of population)														Proportion of the 2011 population that gained access since 1995 [%]	
		URBAN					RURAL					NATIONAL					
		Improved			Unimproved		Improved			Unimproved		Improved			Unimproved		
		Total improved	Piped on premises	Other improved	Unimproved	Surface water	Total improved	Piped on premises	Other improved	Unimproved	Surface water	Total improved	Piped on premises	Other improved	Unimproved		Surface water
Solomon Islands	1990	-	-	-	-	-	-	-	-	-	-	-	-	-	-	-	-
	2000	93	61	32	7	0	76	16	60	21	3	78	23	55	19	3	
	2011	93	61	32	0	7	76	16	60	0	24	79	25	54	0	21	
Somalia	1990	-	0	-	-	-	-	-	-	-	-	-	-	-	-	-	17
	2000	35	12	23	59	6	15	0	15	56	29	21	4	17	58	21	
	2011	66	53	13	30	4	7	0	7	52	41	30	20	10	43	27	
South Africa	1990	98	86	12	2	0	66	23	43	7	27	83	56	27	4	13	23
	2000	98	87	11	2	0	71	28	43	8	21	87	62	25	4	9	
	2011	99	89	10	1	0	79	36	43	11	10	91	69	22	5	4	
South Sudan	1990	-	-	-	-	-	-	-	-	-	-	-	-	-	-	-	-
	2000	-	-	-	-	-	-	-	-	-	-	-	-	-	-	-	
	2011	63	-	-	16	21	55	-	-	14	31	57	-	-	14	29	
Spain	1990	100	99	1	0	0	100	100	0	0	0	100	99	1	0	0	15
	2000	100	99	1	0	0	100	100	0	0	0	100	99	1	0	0	
	2011	100	99	1	0	0	100	100	0	0	0	100	99	1	0	0	
Sri Lanka	1990	92	37	55	8	0	63	6	57	28	9	68	11	57	25	7	29
	2000	95	53	42	5	0	76	15	61	19	5	79	21	58	17	4	
	2011	99	67	32	1	0	92	23	69	6	2	93	29	64	5	2	
Sudan	1990	86	78	8	12	2	61	16	45	29	10	67	32	35	25	8	NA*
	2000	76	63	13	22	2	56	15	41	33	11	62	29	33	29	9	
	2011	66	46	20	31	3	50	13	37	36	14	55	24	31	35	10	
Suriname	1990	99	-	-	1	0	-	-	-	-	-	-	-	-	-	-	19
	2000	98	91	7	2	0	73	49	24	6	21	89	76	13	4	7	
	2011	97	78	19	3	0	81	45	36	0	19	92	68	24	2	6	
Swaziland	1990	86	67	19	6	8	25	4	21	18	57	39	18	21	16	45	38
	2000	89	70	19	5	6	41	13	28	18	41	52	25	27	15	33	
	2011	93	74	19	4	3	67	26	41	17	16	72	36	36	15	13	
Sweden	1990	100	100	0	0	0	100	100	0	0	0	100	100	0	0	0	7
	2000	100	100	0	0	0	100	100	0	0	0	100	100	0	0	0	
	2011	100	100	0	0	0	100	100	0	0	0	100	100	0	0	0	
Switzerland	1990	100	100	0	0	0	100	99	1	0	0	100	100	0	0	0	9
	2000	100	100	0	0	0	100	99	1	0	0	100	100	0	0	0	
	2011	100	100	0	0	0	100	99	1	0	0	100	100	0	0	0	
Syrian Arab Republic	1990	97	94	3	3	0	75	49	26	24	1	86	71	15	14	0	31
	2000	95	93	2	5	0	79	60	19	20	1	88	77	11	12	0	
	2011	93	91	2	7	0	87	79	8	12	1	90	86	4	10	0	
Tajikistan	1990	-	-	-	-	-	-	-	-	-	-	-	-	-	-	-	16
	2000	93	77	16	3	4	49	17	32	14	37	61	33	28	11	28	
	2011	92	87	5	1	7	57	34	23	5	38	66	48	18	4	30	
Thailand	1990	96	74	22	4	0	82	10	72	16	2	86	29	57	12	2	19
	2000	97	77	20	3	0	90	22	68	9	1	92	39	53	7	1	
	2011	97	80	17	3	0	95	31	64	5	0	96	48	48	4	0	
The former Yugoslav Republic of Macedonia	1990	100	97	3	0	0	98	-	-	2	-	99	-	-	1	-	5
	2000	100	97	3	0	0	98	85	13	2	-	99	92	7	1	-	
	2011	100	95	5	0	0	99	83	16	1	-	100	90	10	0	0	
Timor-Leste	1990	-	-	-	-	-	-	-	-	-	-	-	-	-	-	-	30
	2000	69	24	45	28	3	50	11	39	43	7	54	14	40	40	6	
	2011	93	45	48	6	1	60	14	46	29	11	69	23	46	23	8	
Togo	1990	79	14	65	20	1	36	0	36	37	27	48	4	44	32	20	25
	2000	84	13	71	15	1	38	0	38	33	29	53	5	48	27	20	
	2011	90	12	78	9	1	40	1	39	30	30	59	5	54	22	19	
Tokelau	1990	NA	NA	NA	NA	NA	90	-	-	10	-	90	-	-	10	-	NA*
	2000	NA	NA	NA	NA	NA	93	-	-	7	-	93	-	-	7	-	
	2011	NA	NA	NA	NA	NA	97	-	-	3	-	97	-	-	3	-	
Tonga	1990	98	-	-	2	-	99	-	-	1	-	99	-	-	1	-	9
	2000	98	-	-	2	-	99	-	-	1	-	99	-	-	1	-	
	2011	99	-	-	1	-	99	-	-	1	-	99	-	-	1	-	
Trinidad and Tobago	1990	92	81	11	5	3	88	68	20	10	2	89	69	20	9	2	9
	2000	95	85	10	2	3	91	71	20	7	2	92	73	19	6	2	
	2011	98	88	10	0	2	93	74	19	5	2	94	76	18	4	2	
Tunisia	1990	95	89	6	5	0	63	22	41	35	2	82	61	21	17	1	24
	2000	97	92	5	3	0	76	33	43	22	2	89	71	18	10	1	
	2011	100	94	6	0	0	89	-	-	9	2	96	-	-	3	1	
Turkey	1990	94	91	3	6	0	73	51	22	26	1	85	75	10	15	0	29
	2000	97	95	2	3	0	85	73	12	14	1	93	87	6	7	0	
	2011	100	99	1	0	0	99	97	2	1	0	100	99	1	0	0	

Country, area or territory	Year	Population (x 1000)	Percentage urban population	USE OF SANITATION FACILITIES (percentage of population)												Proportion of the 2011 population that gained access since 1995 [%]
				URBAN				RURAL				NATIONAL				
				Unimproved				Unimproved				Unimproved				
				Improved	Shared	Unimproved	Open defecation	Improved	Shared	Unimproved	Open defecation	Improved	Shared	Unimproved	Open defecation	
Turkmenistan	1990	3 668	45	99	-	1	0	97	-	2	1	98	-	1	1	19
	2000	4 501	46	99	-	1	0	97	-	2	1	98	-	1	1	
	2011	5 105	49	100	-	0	0	98	-	1	1	99	-	1	0	
Turks and Caicos Islands	1990	12	74	-	-	-	-	-	-	-	-	-	-	-	-	-
	2000	19	85	-	-	-	-	-	-	-	-	81	-	16	3	
	2011	39	94	-	-	-	-	-	-	-	-	-	-	-	-	
Tuvalu	1990	9	41	75	8	15	2	71	4	18	7	73	6	16	5	12
	2000	9	46	81	9	8	2	76	4	13	7	78	6	11	5	
	2011	10	51	86	9	3	2	80	5	8	7	83	7	6	4	
Uganda	1990	17 700	11	33	48	17	2	26	12	40	22	27	16	37	20	17
	2000	24 213	12	33	49	16	2	31	14	39	16	31	18	37	14	
	2011	34 509	16	34	50	15	1	35	16	39	10	35	21	35	9	
Ukraine	1990	51 645	67	100	0	0	0	-	-	-	-	-	-	-	-	NA*
	2000	48 892	67	97	2	1	0	91	4	5	0	95	3	2	0	
	2011	45 190	69	96	2	2	0	89	4	7	0	94	3	3	0	
United Arab Emirates	1990	1 809	79	98	2	0	0	95	5	0	0	97	2	1	0	69
	2000	3 033	81	98	2	0	0	95	5	0	0	97	2	1	0	
	2011	7 891	84	98	2	0	0	95	5	0	0	98	2	0	0	
United Kingdom of Great Britain and Northern Ireland	1990	57 214	78	100	0	0	0	100	0	0	0	100	0	0	0	7
	2000	58 874	79	100	0	0	0	100	0	0	0	100	0	0	0	
	2011	62 417	80	100	0	0	0	100	0	0	0	100	0	0	0	
United Republic of Tanzania	1990	25 479	19	9	8	81	2	6	3	81	10	7	4	80	9	7
	2000	34 038	22	16	15	67	2	7	4	76	13	9	6	74	11	
	2011	46 218	27	24	23	51	2	7	4	73	16	12	9	67	12	
United States of America	1990	253 339	75	100	0	0	0	99	-	1	-	100	-	0	0	15
	2000	282 496	79	100	0	0	0	99	-	1	-	100	-	0	0	
	2011	313 085	82	100	0	0	0	99	-	1	-	100	-	0	0	
United States Virgin Islands	1990	103	88	-	-	-	-	-	-	-	-	96	-	4	-	2
	2000	109	93	-	-	-	-	-	-	-	-	96	-	4	-	
	2011	109	95	-	-	-	-	-	-	-	-	96	-	4	-	
Uruguay	1990	3 109	89	96	0	1	3	85	1	1	13	95	0	1	4	8
	2000	3 319	91	97	0	1	2	90	1	0	9	97	0	0	3	
	2011	3 380	93	99	0	1	0	98	1	1	0	99	0	1	0	
Uzbekistan	1990	20 515	40	95	-	5	0	76	-	24	0	84	-	16	0	30
	2000	24 776	37	97	-	3	0	87	-	13	0	91	-	9	0	
	2011	27 760	36	100	-	0	0	100	-	0	0	100	-	0	0	
Vanuatu	1990	147	19	-	-	-	-	-	-	-	-	-	-	-	-	33
	2000	185	22	54	28	18	0	38	10	50	2	42	14	42	2	
	2011	246	25	65	33	2	0	55	15	28	2	58	20	20	2	
Venezuela (Bolivarian Republic of)	1990	19 685	84	89	-	7	4	45	-	14	41	82	-	8	10	-
	2000	24 348	90	93	-	2	5	54	-	6	40	89	-	3	8	
	2011	29 437	94	-	-	-	-	-	-	-	-	-	-	-	-	
Viet Nam	1990	67 102	20	64	4	8	24	30	2	24	44	37	2	21	40	36
	2000	78 758	24	78	4	7	11	48	3	23	26	55	3	20	22	
	2011	88 792	31	93	5	2	0	67	4	24	5	75	4	18	3	
West Bank and Gaza Strip	1990	2 081	68	90	5	3	2	-	-	-	-	-	-	-	-	40
	2000	3 199	72	92	5	2	1	85	7	6	2	90	5	4	1	
	2011	4 152	74	95	5	0	0	93	7	0	0	94	6	0	0	
Yemen	1990	11 948	21	70	1	23	6	12	1	33	54	24	1	31	44	34
	2000	17 723	26	82	2	12	4	24	2	32	42	39	2	27	32	
	2011	24 800	32	93	2	3	2	34	3	32	31	53	3	22	22	
Zambia	1990	7 860	39	61	26	11	2	29	7	24	40	42	14	19	25	15
	2000	10 202	35	59	25	14	2	31	7	29	33	41	13	24	22	
	2011	13 475	39	56	23	19	2	33	8	32	27	42	14	27	17	
Zimbabwe	1990	10 469	29	54	46	0	0	35	18	0	47	40	26	0	34	3
	2000	12 509	34	53	45	1	1	34	17	5	44	40	27	3	30	
	2011	12 754	39	52	44	2	2	33	17	10	40	40	27	7	26	

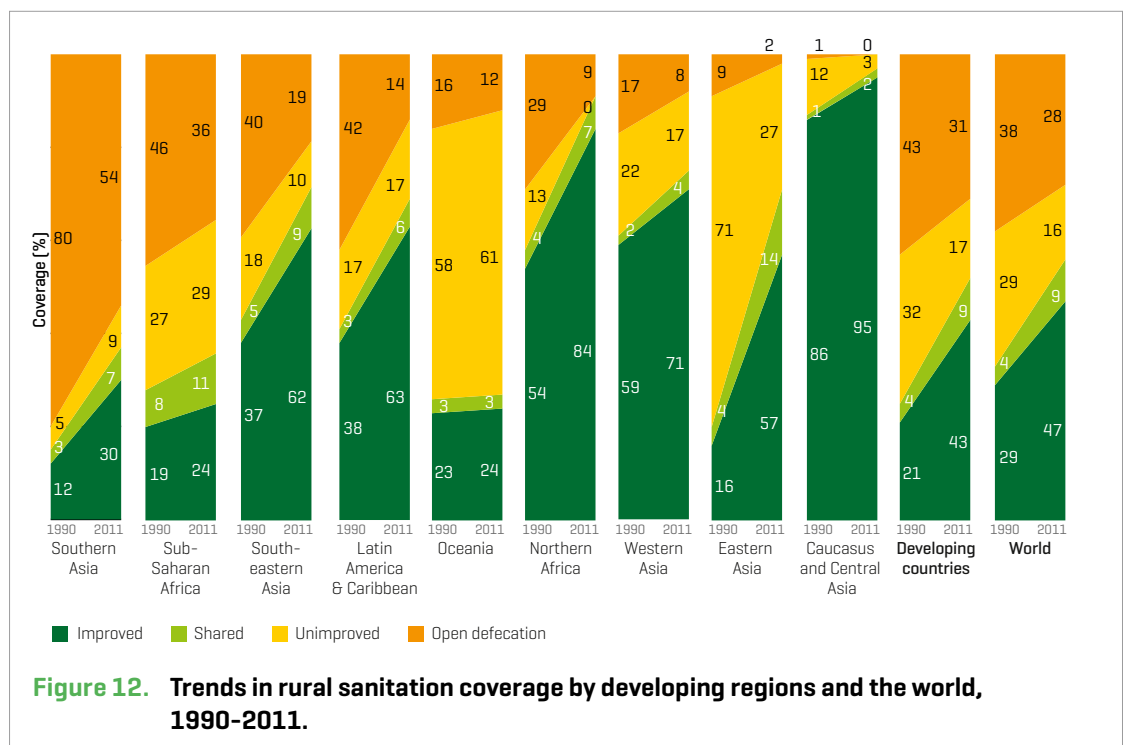
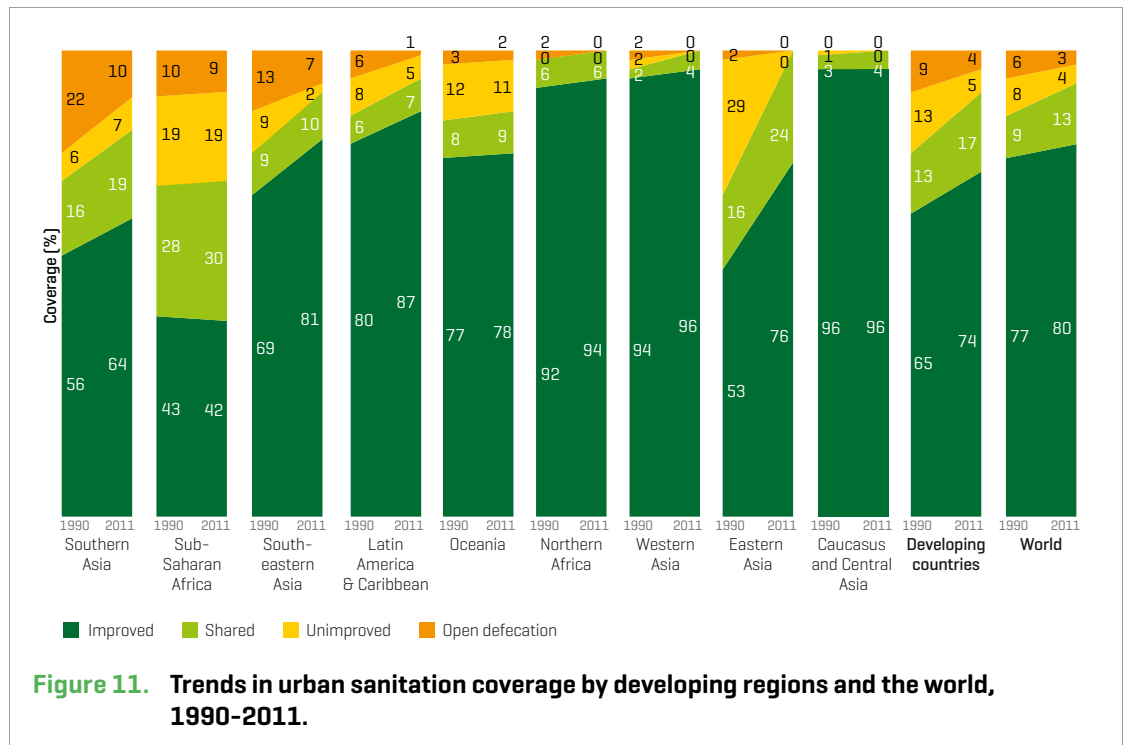
Country, area or territory	Year	USE OF DRINKING-WATER SOURCES (percentage of population)														Proportion of the 2011 population that gained access since 1995 [%]	
		URBAN					RURAL					NATIONAL					
		Improved			Unimproved		Improved			Unimproved		Improved			Unimproved		
		Total improved	Piped on premises	Other improved	Unimproved	Surface water	Total improved	Piped on premises	Other improved	Unimproved	Surface water	Total improved	Piped on premises	Other improved	Unimproved		Surface water
Turkmenistan	1990	99	-	-	0	1	-	-	-	-	-	-	-	-	-	-	0
	2000	97	81	16	2	1	72	29	43	8	20	83	53	30	6	11	
	2011	89	77	12	10	1	54	15	39	46	-	71	45	26	29	-	
Turks and Caicos Islands	1990	-	-	-	-	-	-	-	-	-	-	-	-	-	-	-	-
	2000	-	-	-	-	-	-	-	-	-	-	87	28	59	13	-	
	2011	-	-	-	-	-	-	-	-	-	-	-	-	-	-	-	
Tuvalu	1990	92	92	0	8	-	89	89	0	11	-	90	90	0	10	-	12
	2000	95	95	0	5	-	93	93	0	7	-	94	94	0	6	-	
	2011	98	97	1	2	-	97	97	0	3	-	98	97	1	2	-	
Uganda	1990	79	8	71	18	3	36	0	36	38	26	41	1	40	35	24	45
	2000	85	14	71	12	3	53	1	52	28	19	57	2	55	26	17	
	2011	91	20	71	6	3	72	2	70	17	11	75	5	70	16	9	
Ukraine	1990	100	-	-	0	0	-	-	-	-	-	-	-	-	-	-	NA*
	2000	99	92	7	1	0	92	50	42	8	0	97	78	19	3	0	
	2011	98	86	12	2	0	98	22	76	2	0	98	66	32	2	0	
United Arab Emirates	1990	100	-	-	0	0	100	-	-	0	0	100	-	-	0	0	70
	2000	100	80	20	0	0	100	70	30	0	0	100	78	22	0	0	
	2011	100	-	-	0	0	100	-	-	0	0	100	-	-	0	0	
United Kingdom of Great Britain and Northern Ireland	1990	100	100	0	0	0	100	98	2	0	0	100	100	0	0	0	7
	2000	100	100	0	0	0	100	98	2	0	0	100	100	0	0	0	
	2011	100	100	0	0	0	100	98	2	0	0	100	100	0	0	0	
United Republic of Tanzania	1990	94	33	61	3	3	46	0	46	30	24	55	7	48	25	20	18
	2000	87	29	58	10	3	45	2	43	32	23	54	8	46	27	19	
	2011	79	23	56	18	3	44	4	40	33	23	53	9	44	30	17	
United States of America	1990	100	97	3	0	0	94	46	48	6	-	98	84	14	2	-	15
	2000	100	97	3	0	0	94	-	-	6	-	99	-	-	1	-	
	2011	100	97	3	0	0	94	-	-	6	-	99	-	-	1	-	
United States Virgin Islands	1990	-	-	-	-	-	-	-	-	-	-	100	41	59	0	0	2
	2000	-	-	-	-	-	-	-	-	-	-	100	46	54	0	0	
	2011	-	-	-	-	-	-	-	-	-	-	100	-	-	0	0	
Uruguay	1990	98	95	3	2	0	82	56	26	17	1	96	90	6	4	0	7
	2000	99	96	3	1	0	88	70	18	11	1	98	94	4	2	0	
	2011	100	100	0	0	0	98	97	1	1	1	100	99	1	0	0	
Uzbekistan	1990	97	86	11	1	2	85	37	48	8	7	90	57	33	5	5	13
	2000	98	86	12	1	1	83	32	51	11	6	89	52	37	7	4	
	2011	98	85	13	1	1	81	26	55	14	5	87	47	40	10	3	
Vanuatu	1990	94	79	15	6	0	55	27	28	37	8	62	37	25	31	7	43
	2000	96	65	31	4	0	71	22	49	21	8	76	32	44	17	7	
	2011	98	51	47	2	0	88	17	71	4	8	91	25	66	3	6	
Venezuela (Bolivarian Republic of)	1990	93	87	6	6	1	71	44	27	13	16	90	81	9	7	3	-
	2000	94	89	5	5	1	74	50	24	10	16	92	85	7	6	2	
	2011	-	-	-	-	-	-	-	-	-	-	-	-	-	-	-	
Viet Nam	1990	88	45	43	6	6	50	0	50	31	19	58	9	49	26	16	39
	2000	94	51	43	2	4	71	4	67	16	13	77	15	62	12	11	
	2011	99	58	41	1	0	94	9	85	3	3	96	24	72	2	2	
West Bank and Gaza Strip	1990	100	-	-	0	0	-	-	-	-	-	-	-	-	-	-	21
	2000	94	87	7	5	1	87	64	23	10	3	92	81	11	7	1	
	2011	82	75	7	17	1	82	70	12	15	3	82	74	8	17	1	
Yemen	1990	96	84	12	3	1	59	12	47	34	7	66	27	39	28	6	16
	2000	83	77	6	16	1	52	20	32	41	7	60	35	25	35	5	
	2011	72	71	1	27	1	47	26	21	47	6	55	40	15	41	4	
Zambia	1990	89	48	41	10	1	22	1	21	46	32	48	20	28	32	20	30
	2000	87	42	45	12	1	36	1	35	37	27	54	16	38	28	18	
	2011	86	36	50	12	2	50	2	48	28	22	64	15	49	22	14	
Zimbabwe	1990	100	97	3	0	0	71	7	64	17	12	79	33	46	12	9	7
	2000	99	88	11	1	0	70	6	64	20	10	80	34	46	13	7	
	2011	97	78	19	3	0	69	5	64	23	8	80	33	47	15	5	

Region or world	Year	Population (x 1000)	Percentage urban population	USE OF SANITATION FACILITIES (percentage of population)												Proportion of the 2011 population that gained access since 1995 [%]
				URBAN				RURAL				TOTAL				
				Unimproved				Unimproved				Unimproved				
				Improved	Shared	Unimproved	Open defecation	Improved	Shared	Unimproved	Open defecation	Improved	Shared	Unimproved	Open defecation	
Sub-Saharan Africa	1990	515 588	28	43	28	19	10	19	8	27	46	26	14	24	36	13
	2000	669 118	32	43	29	18	10	20	9	28	43	28	16	24	32	
	2011	877 563	37	42	30	19	9	24	11	29	36	30	18	26	26	
Northern Africa	1990	119 694	49	92	6	0	2	54	4	13	29	72	5	7	16	29
	2000	141 978	52	93	6	0	1	71	5	6	18	83	6	2	9	
	2011	168 355	55	94	6	0	0	84	7	0	9	90	6	0	4	
Eastern Asia	1990	1 216 665	29	53	16	29	2	16	4	71	9	27	7	59	7	33
	2000	1 347 625	38	64	19	16	1	36	9	50	5	47	13	36	4	
	2011	1 430 886	52	76	24	0	0	57	14	27	2	67	19	13	1	
Southern Asia	1990	1 195 985	26	56	16	6	22	12	3	5	80	24	6	6	64	20
	2000	1 460 201	29	60	17	7	16	20	5	7	68	32	8	7	53	
	2011	1 728 477	33	64	19	7	10	30	7	9	54	41	11	9	39	
South-eastern Asia	1990	445 361	32	69	9	9	13	37	5	18	40	47	6	16	31	28
	2000	523 831	38	74	10	6	10	50	7	14	29	59	8	11	22	
	2011	600 025	45	81	10	2	7	62	9	10	19	71	10	5	14	
Western Asia	1990	127 092	61	94	2	2	2	59	2	22	17	80	2	10	8	33
	2000	161 478	64	94	4	1	1	63	3	20	14	83	4	7	6	
	2011	211 444	68	96	4	0	0	71	4	17	8	88	4	5	3	
Oceania	1990	6 459	24	77	8	12	3	23	3	58	16	36	4	47	13	10
	2000	8 093	24	78	8	12	2	23	3	59	15	36	4	48	12	
	2011	10 141	23	78	9	11	2	24	3	61	12	36	4	50	10	
Latin America and the Caribbean	1990	443 032	70	80	6	8	6	38	3	17	42	68	5	10	17	24
	2000	521 429	75	84	6	6	4	49	4	18	29	75	6	9	10	
	2011	596 629	79	87	7	5	1	63	6	17	14	82	6	8	4	
Caucasus and Central Asia	1990	66 627	48	96	3	1	0	86	1	12	1	91	2	6	1	18
	2000	71 294	44	94	4	2	0	86	2	11	1	90	3	7	0	
	2011	78 177	44	96	4	0	0	95	2	3	0	96	3	1	0	
Developing countries	1990	4 136 502	35	65	13	13	9	21	4	32	43	36	7	26	31	24
	2000	4 905 047	40	69	15	9	7	32	7	24	37	47	10	18	25	
	2011	5 701 698	46	74	17	5	4	43	9	17	31	57	13	12	18	
Developed countries	1990	1 149 637	72	97	2	1	0	90	3	7	0	95	3	2	0	6
	2000	1 195 733	74	96	2	2	0	90	3	7	0	95	2	3	0	
	2011	1 249 023	78	97	2	1	0	92	3	5	0	96	2	2	0	
Least developed countries	1990	510 107	21	40	24	22	14	16	7	24	53	21	11	23	45	18
	2000	661 996	24	45	23	21	11	23	9	25	43	29	13	23	35	
	2011	851 103	29	48	26	20	6	31	12	25	32	36	16	23	25	
World	1990	5 286 139	43	77	9	8	6	29	4	29	38	49	6	21	24	21
	2000	6 100 780	47	77	11	7	5	38	6	22	34	56	8	16	20	
	2011	6 950 721	52	80	13	4	3	47	9	16	28	64	11	10	15	

¹ For communication purposes in its report, the JMP displays these proportions as rounded integers, which together add to 100% for drinking-water and sanitation, respectively. For its database on the JMP web site (www.wssinfo.org), we use unrounded estimates to achieve greater accuracy when converting coverage estimates into numbers of people with or without access. Any "apparent" discrepancies between the published estimates and those derived from the JMP web site are due to the published estimates appearing rounded to the nearest integer.

Region or world	Year	USE OF DRINKING-WATER SOURCES (percentage of population)															Proportion of the 2011 population that gained access since 1995 [%]
		URBAN					RURAL					TOTAL					
		Improved			Unimproved		Improved			Unimproved		Improved			Unimproved		
		Total improved	Piped on premises	Other improved	Unimproved	Surface water	Total improved	Piped on premises	Other improved	Unimproved	Surface water	Total improved	Piped on premises	Other improved	Unimproved	Surface water	
Sub-Saharan Africa	1990	83	43	40	14	3	35	4	31	32	33	49	15	34	27	24	28
	2000	83	39	44	14	3	42	4	38	32	26	55	15	40	26	19	
	2011	84	34	50	13	3	51	5	46	30	19	63	15	48	24	13	
Northern Africa	1990	94	86	8	6	0	80	32	48	17	3	87	58	29	11	2	23
	2000	94	89	5	6	0	84	51	33	12	4	89	71	18	9	2	
	2011	95	91	4	5	0	89	73	16	6	5	92	83	9	6	2	
Eastern Asia	1990	97	92	5	2	1	56	12	44	34	10	68	35	33	25	7	25
	2000	98	93	5	2	0	71	29	42	23	6	81	53	28	15	4	
	2011	98	95	3	2	0	85	45	40	13	2	92	71	21	7	1	
Southern Asia	1990	90	51	39	9	1	66	7	59	29	5	72	19	53	24	4	32
	2000	92	53	39	7	1	76	11	65	20	4	81	23	58	16	3	
	2011	95	54	41	5	0	88	15	73	10	2	90	28	62	9	1	
South-eastern Asia	1990	90	41	49	8	2	62	5	57	26	12	71	17	54	20	9	28
	2000	92	45	47	6	2	72	10	62	19	9	80	24	56	14	6	
	2011	94	51	43	6	0	84	13	71	13	3	89	30	59	9	2	
Western Asia	1990	95	85	10	4	1	69	41	28	24	7	85	68	17	12	3	32
	2000	96	87	9	3	1	73	53	20	20	7	87	75	12	10	3	
	2011	96	88	8	4	0	78	66	12	18	4	90	81	9	9	1	
Oceania	1990	92	74	18	5	3	37	12	25	23	40	50	27	23	19	31	21
	2000	93	75	18	5	2	41	12	29	20	39	53	27	26	16	31	
	2011	95	74	21	3	2	45	11	34	14	41	56	25	31	12	32	
Latin America and the Caribbean	1990	94	86	8	5	1	64	38	26	16	20	85	72	13	8	7	23
	2000	96	90	6	3	1	72	50	22	14	14	90	80	10	6	4	
	2011	97	94	3	3	0	82	64	18	11	7	94	88	6	4	2	
Caucasus and Central Asia	1990	97	85	12	2	1	81	31	50	12	7	89	56	33	7	4	10
	2000	96	84	12	3	1	77	29	48	11	12	85	53	32	8	7	
	2011	96	84	12	3	1	79	29	50	11	10	86	53	33	8	6	
Developing countries	1990	93	71	22	6	1	59	11	48	29	12	70	32	38	22	8	28
	2000	94	72	22	5	1	69	19	50	22	9	79	40	39	15	6	
	2011	95	74	21	4	1	79	24	55	15	6	87	47	40	10	3	
Developed countries	1990	99	97	2	1	0	94	69	25	6	0	98	89	9	2	0	7
	2000	100	97	3	0	0	95	77	18	5	0	98	92	6	2	0	
	2011	100	97	3	0	0	97	79	18	2	1	99	93	6	1	0	
Least developed countries	1990	81	29	52	15	4	44	2	42	33	23	51	7	44	30	19	29
	2000	79	31	48	17	4	49	3	46	32	19	56	9	47	28	16	
	2011	83	33	50	15	2	58	4	54	29	13	65	12	53	25	10	
World	1990	95	80	15	4	1	62	17	45	27	11	76	44	32	18	6	24
	2000	95	80	15	4	1	71	24	47	21	8	83	50	33	12	5	
	2011	96	80	16	4	0	81	29	52	14	5	89	55	34	8	3	

TRENDS IN URBAN AND RURAL SANITATION COVERAGE, 1990-2011



TRENDS IN URBAN AND RURAL DRINKING-WATER COVERAGE, 1990-2011

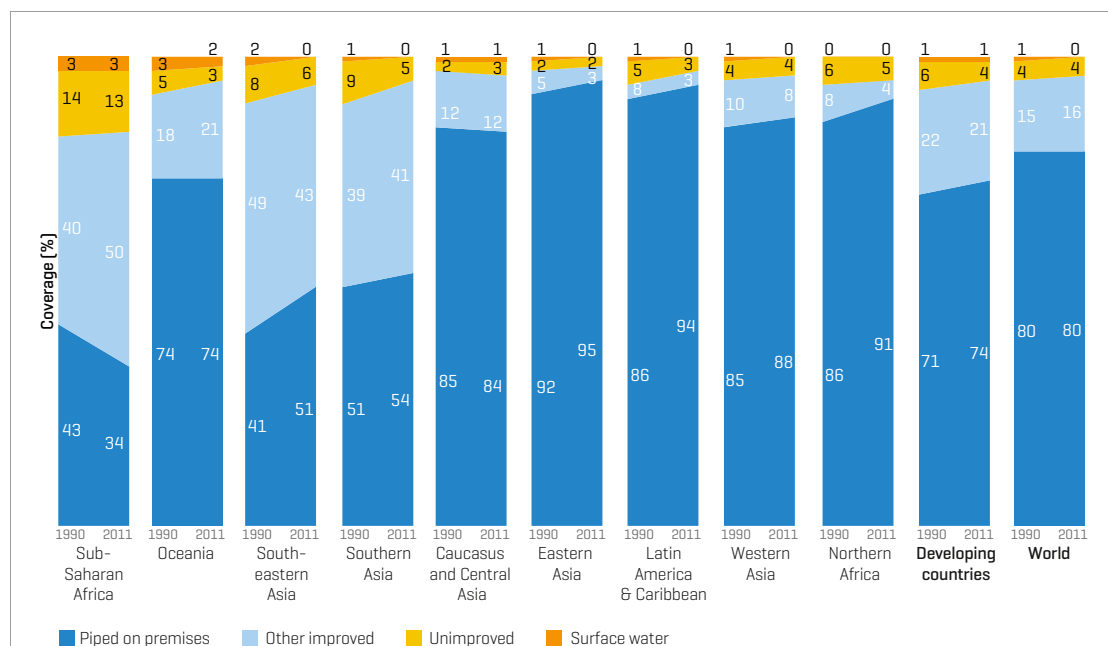


Figure 13. Trends in urban drinking-water coverage by developing regions and the world, 1990-2011.

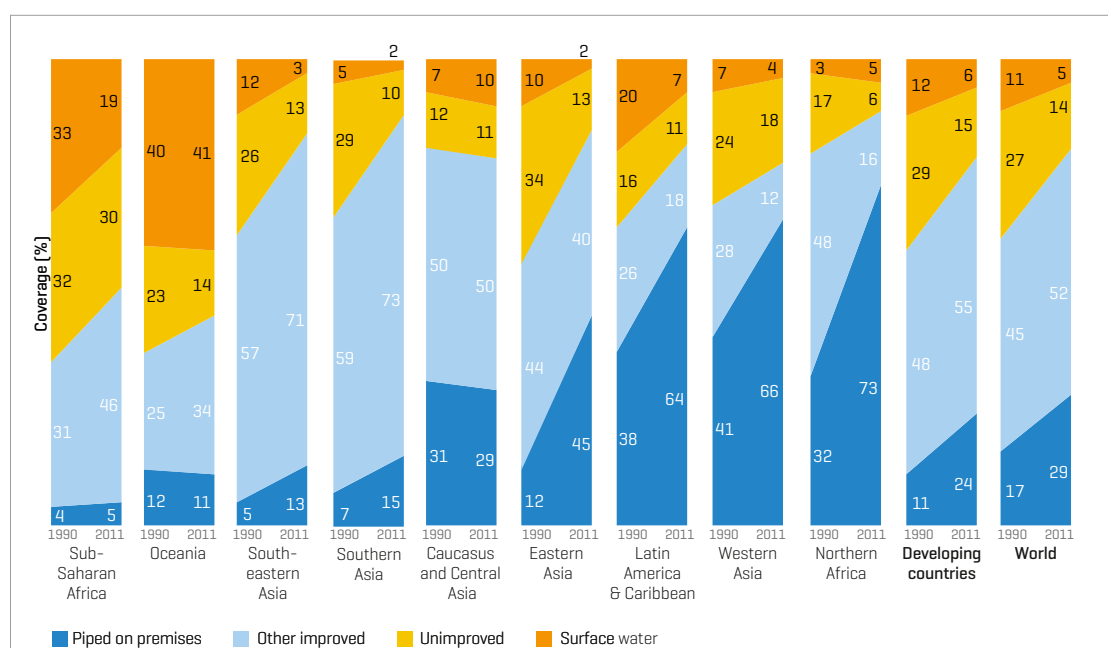
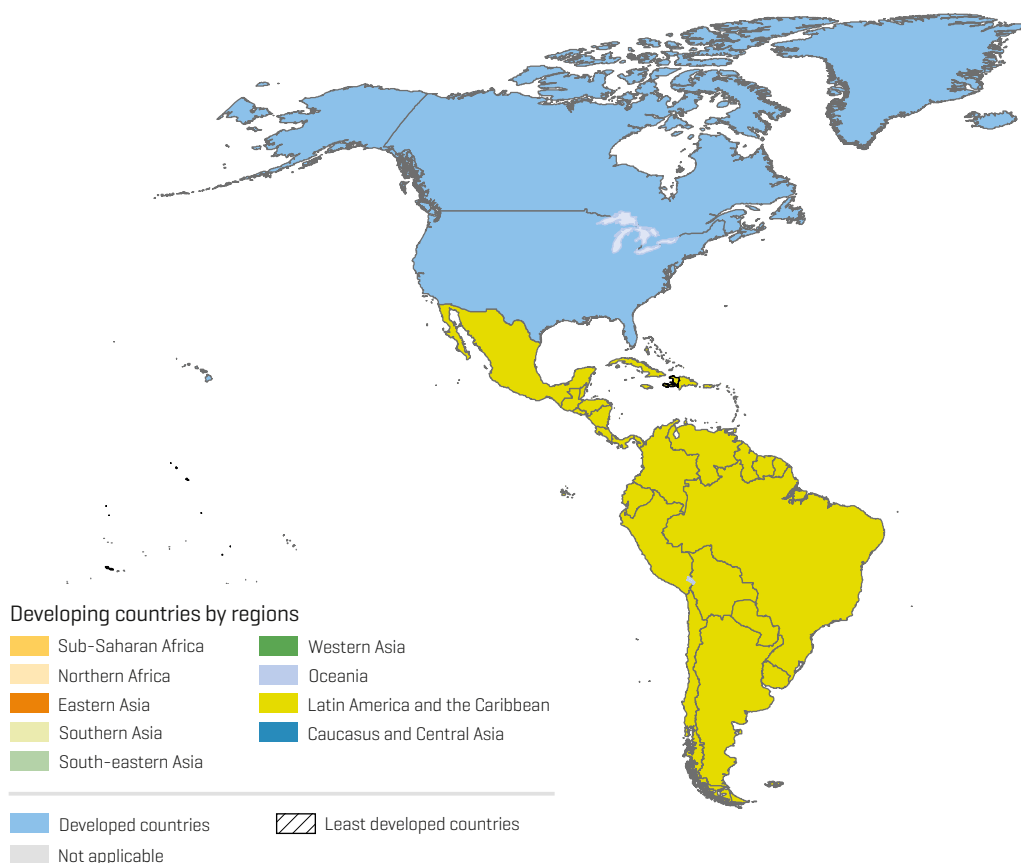


Figure 14. Trends in rural drinking-water coverage by developing regions and the world, 1990-2011.

MILLENNIUM DEVELOPMENT GOALS: REGIONAL GROUPINGS



Developing countries by regions

■ SUB-SAHARAN AFRICA

Angola, Benin, Botswana, Burkina Faso, Burundi, Cameroon, Cape Verde, Central African Republic, Chad, Comoros, Congo, Côte d'Ivoire, Democratic Republic of the Congo, Djibouti, Equatorial Guinea, Eritrea, Ethiopia, Gabon, Gambia, Ghana, Guinea, Guinea-Bissau, Kenya, Lesotho, Liberia, Madagascar, Malawi, Mali, Mauritania, Mauritius, Mayotte, Mozambique, Namibia, Niger, Nigeria, Réunion, Rwanda, Sao Tome and Principe, Senegal, Seychelles, Sierra Leone, Somalia, South Africa, South Sudan, Sudan, Swaziland, Togo, Uganda, United Republic of Tanzania, Zambia, Zimbabwe

■ NORTHERN AFRICA

Algeria, Egypt, Libya, Morocco, Tunisia, Western Sahara

■ EASTERN ASIA

China, Democratic People's Republic of Korea, Mongolia, Republic of Korea

■ SOUTHERN ASIA

Afghanistan, Bangladesh, Bhutan, India, Iran [Islamic Republic of], Maldives, Nepal, Pakistan, Sri Lanka

■ SOUTH-EASTERN ASIA

Brunei Darussalam, Cambodia, Indonesia, Lao People's Democratic Republic, Malaysia, Myanmar, Philippines, Singapore, Thailand, Timor-Leste, Viet Nam

■ WESTERN ASIA

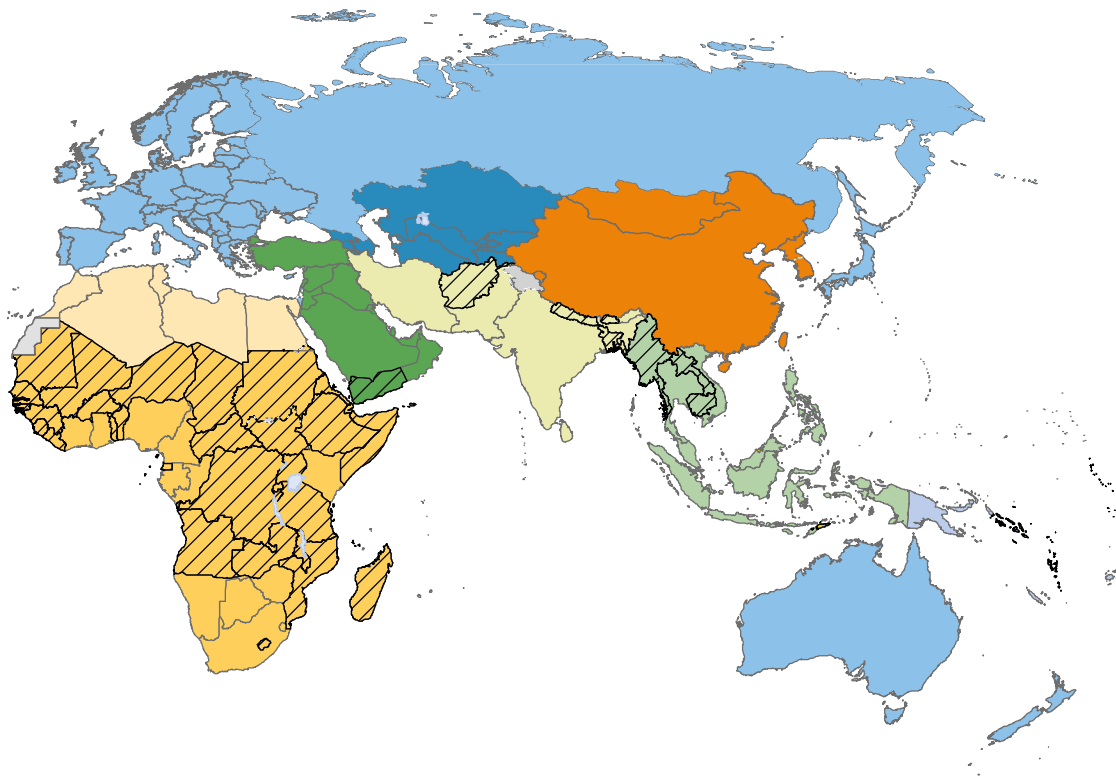
Bahrain, Iraq, Jordan, Kuwait, Lebanon, West Bank and Gaza Strip, Oman, Qatar, Saudi Arabia, Syrian Arab Republic, Turkey, United Arab Emirates, Yemen

■ OCEANIA

American Samoa, Cook Islands, Fiji, French Polynesia, Guam, Kiribati, Marshall Islands, Micronesia [Federated States of], Nauru, New Caledonia, Niue, Northern Mariana Islands, Palau, Papua New Guinea, Samoa, Solomon Islands, Tokelau, Tonga, Tuvalu, Vanuatu

■ LATIN AMERICA & THE CARIBBEAN

Anguilla, Antigua and Barbuda, Argentina, Aruba, Bahamas,



Barbados, Belize, Bolivia [Plurinational State of], Brazil, British Virgin Islands, Cayman Islands, Chile, Colombia, Costa Rica, Cuba, Dominica, Dominican Republic, Ecuador, El Salvador, Falkland Islands [Malvinas], French Guiana, Grenada, Guadeloupe, Guatemala, Guyana, Haiti, Honduras, Jamaica, Martinique, Mexico, Montserrat, Netherlands Antilles, Nicaragua, Panama, Paraguay, Peru, Puerto Rico, Saint Kitts and Nevis, Saint Lucia, Saint Vincent and the Grenadines, Suriname, Trinidad and Tobago, Turks and Caicos Islands, United States Virgin Islands, Uruguay, Venezuela [Bolivarian Republic of]

■ CAUCASUS AND CENTRAL ASIA

Armenia, Azerbaijan, Georgia, Kazakhstan, Kyrgyzstan, Tajikistan, Turkmenistan, Uzbekistan

■ Developed countries

Albania andorra, Australia, Austria, Belarus, Belgium, Bermuda, Bosnia and Herzegovina, Bulgaria, Canada, Channel Islands, Croatia, Cyprus, Czech Republic, Denmark, Estonia, Faeroe Islands, Finland, France, Germany, Greece, Greenland, Hungary, Iceland, Ireland, Isle of Man, Israel, Italy, Japan, Latvia, Liechtenstein, Lithuania, Luxembourg, Malta, Monaco, Montenegro, Netherlands, New Zealand, Norway, Poland, Portugal, Republic of Moldova, Romania, Russian Federation, San Marino, Serbia, Slovakia, Slovenia, Spain, Sweden, Switzerland, The former Yugoslav Republic of Macedonia, Ukraine, United Kingdom of Great Britain and Northern Ireland, United States of America

▨ Least developed countries

Afghanistan, Angola, Bangladesh, Benin, Bhutan, Burkina Faso, Burundi, Cambodia, Central African Republic, Chad, Comoros, Democratic Republic of the Congo, Djibouti, Equatorial Guinea, Eritrea, Ethiopia, Gambia, Guinea, Guinea-Bissau, Haiti, Kiribati, Lao People's Democratic Republic, Lesotho, Liberia, Madagascar, Malawi, Mali, Mauritania, Mozambique, Myanmar, Nepal, Niger, Rwanda, Samoa, Sao Tome and Principe, Senegal, Sierra Leone, Solomon Islands, Somalia, South Sudan, Sudan, Timor-Leste, Togo, Tuvalu, Uganda, United Republic of Tanzania, Vanuatu, Yemen, Zambia



JMP web site: www.wssinfo.org



World Health
Organization

unicef 

ISBN 978 92 4 150539 0



9 789241 505390